

**STANDARD DEPARTURE  
CHART INSTRUMENT  
(SID) - ICAO**

**AMILCAR CABRAL  
AIRPORT GVAC  
RWY 19**

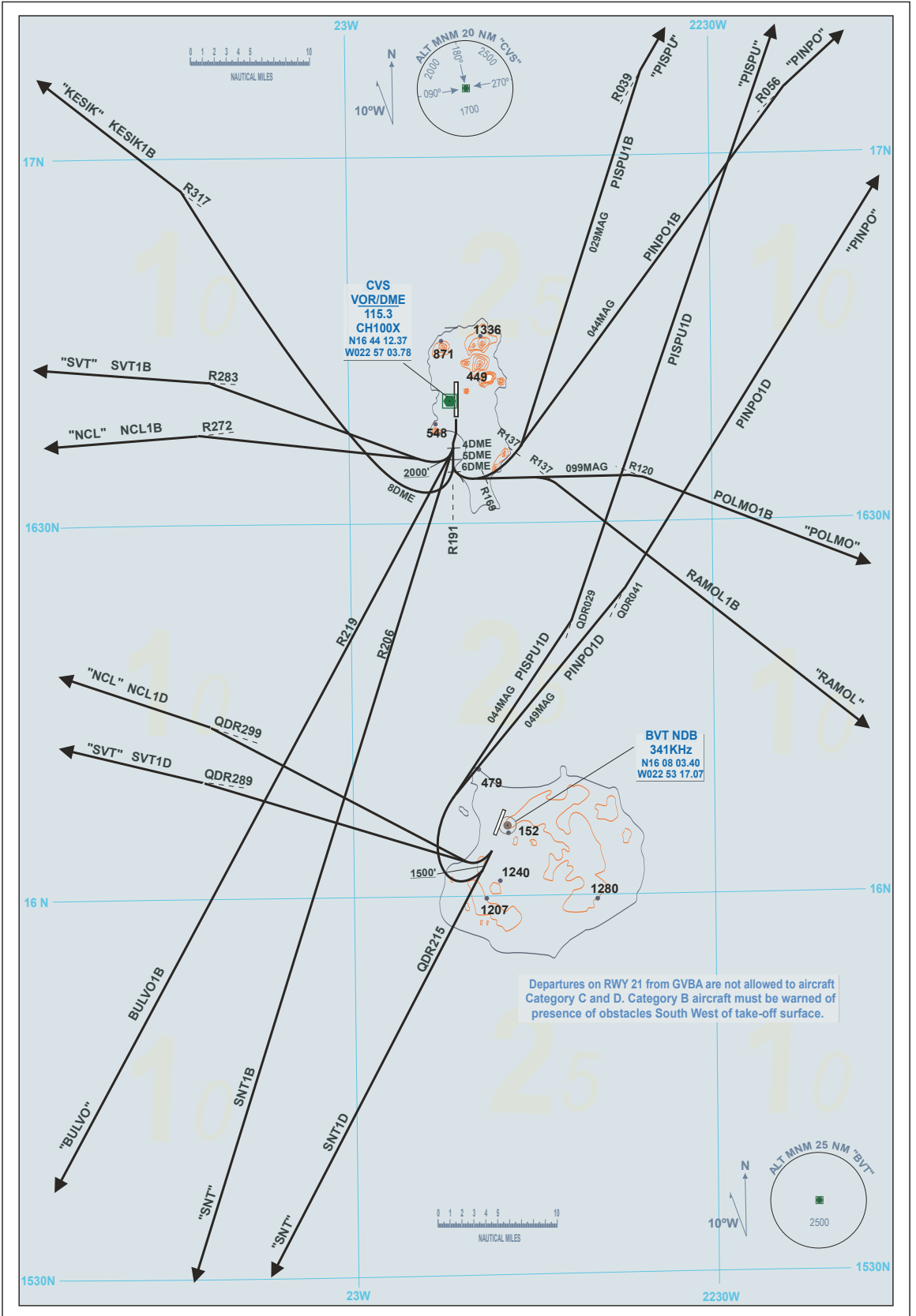
TA: 7000'  
VAR: 10W

APP - 126.400  
TWR - 119.700

TA: 7000'  
VAR: 10W

APP - 126.400  
TWR - 118.900

**RABIL AIRPORT  
GVBA  
RWY 21**



Departures on RWY 21 from GVBA are not allowed to aircraft Category C and D. Category B aircraft must be warned of presence of obstacles South West of take-off surface.