

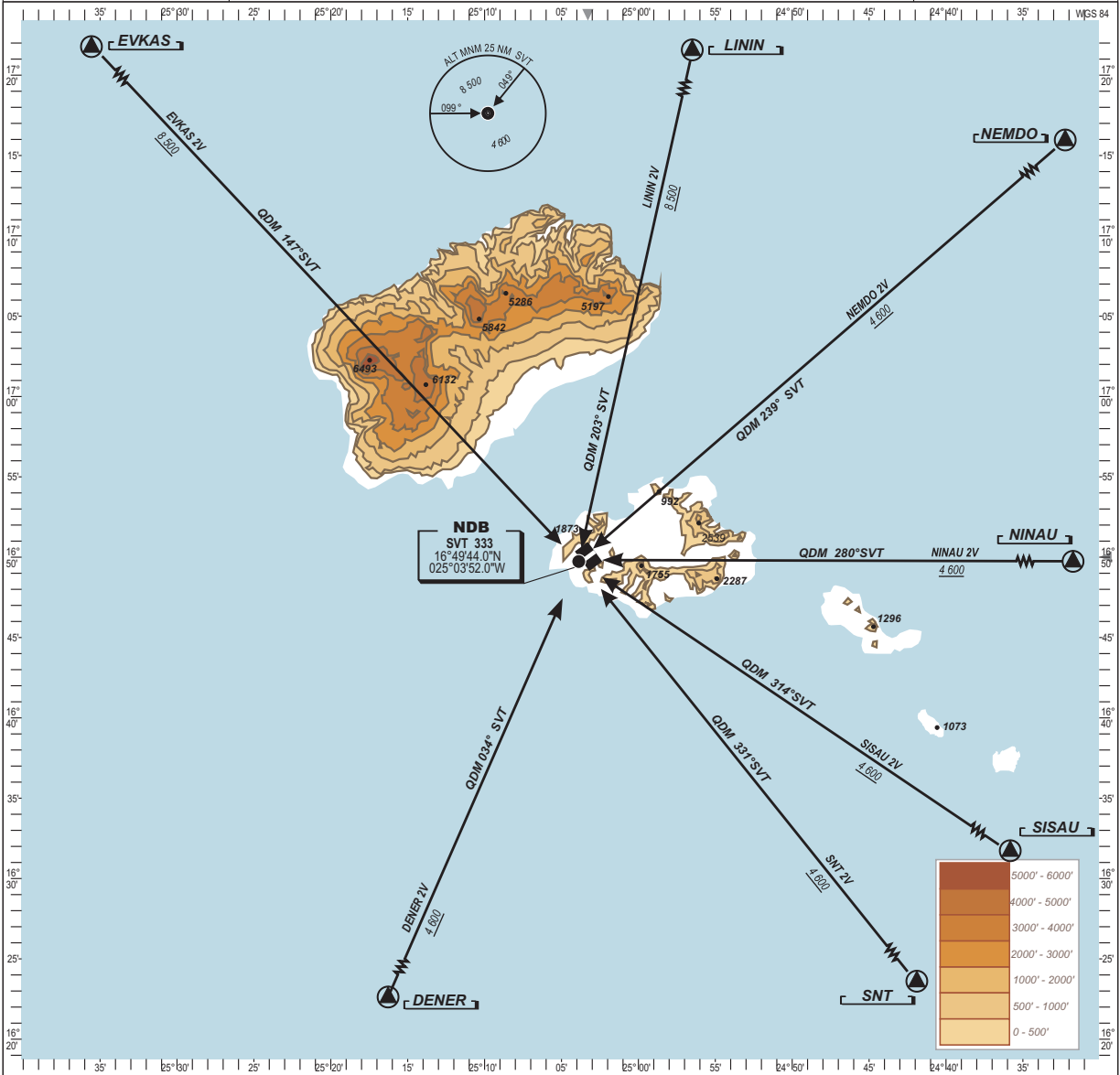
**STANDARD ARRIVAL CHART
INSTRUMENT (STAR)
Categories A-B-C**

TWR 118.4
APP
ACC

**SÃO PEDRO CESARIA EVORA/Intl - (GVSV)
RWYs 06 & 24
LININ, NEMDO 2V, NINAU 2V,
SISAU 2V, SNT 2V, DENER 2V, EVKAS 2V**

ELEV. & ALT IN FEET
DISTANCE IN NM
BRG ARE MAGNETIC
VAR 10°W (2020, 0.16°E yearly)

TRANSITIONAL ALTITUDE: 7 000



Note: Minimum Sector Altitudes (MSA) are indicated for each leg. Except in case of emergency or loss of communication, altitudes to maintain are those assigned by ATC. These must respect the indicated MSAs.

- DENER 2V:** From DENER, proceed direct to SVT NDB.
- EVKAS 2V:** From EVKAS, proceed direct to SVT NDB.
- LININ 2V:** From LININ, proceed direct to SVT NDB.
- NEMDO 2V:** From NEMDO, proceed direct to SVT NDB.
- NINAU 2V:** From NINAU, proceed direct to SVT NDB.
- SISAU 2V:** From SISAU, proceed direct to SVT NDB.
- SNT 2V:** From SNT VOR, proceed direct to SVT NDB.