

INSTRUMENT

APPROACH

CHART - ICAO

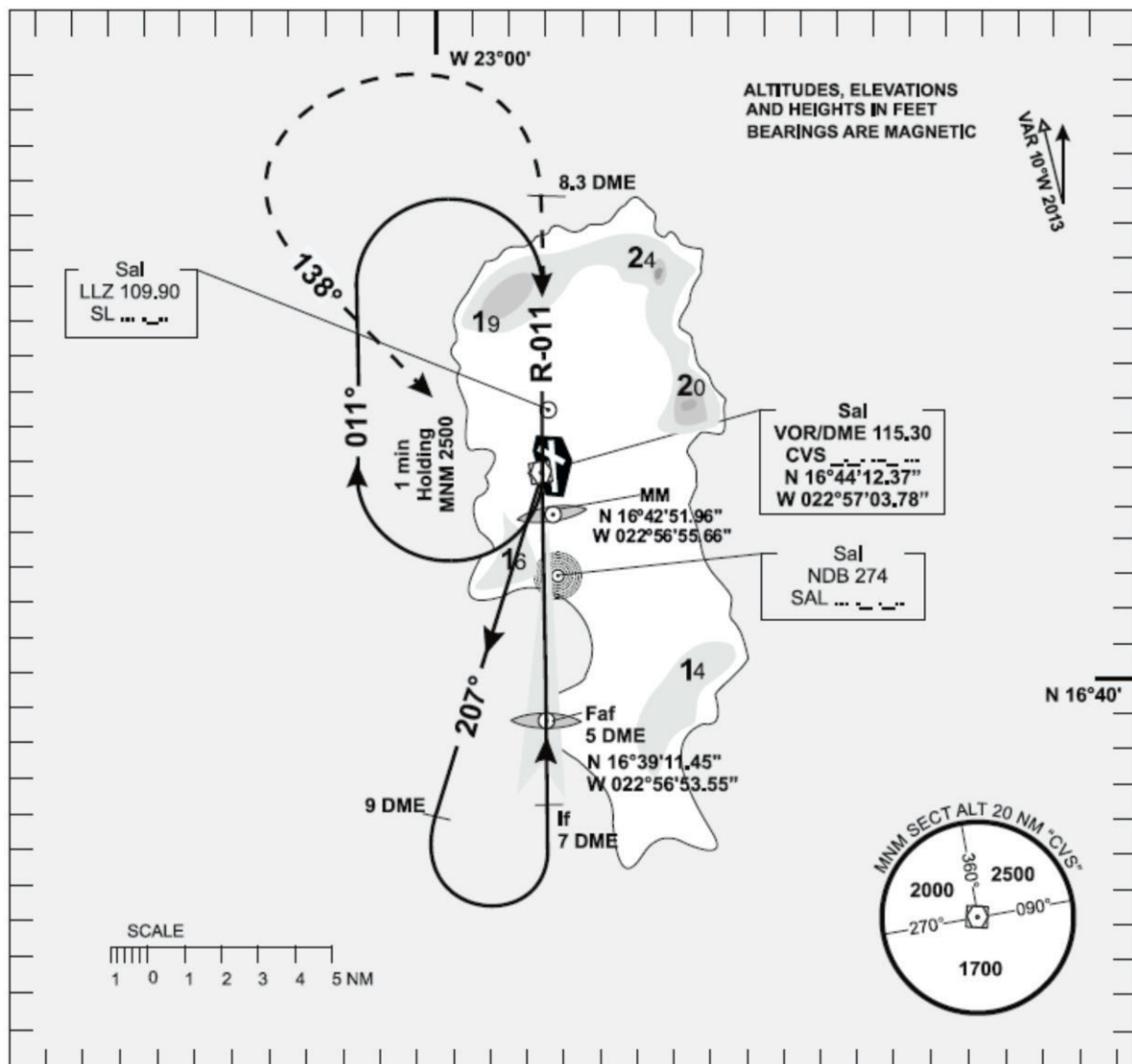
AERODROME ELEV - 184ft
HEIGHTS RELATED TO
THR RWY-01 ELEV - 184ft

TWR - 119.70
APP - 126.40

SAL/ AMILCAR CABRAL

VOR/ILS
RWY 01

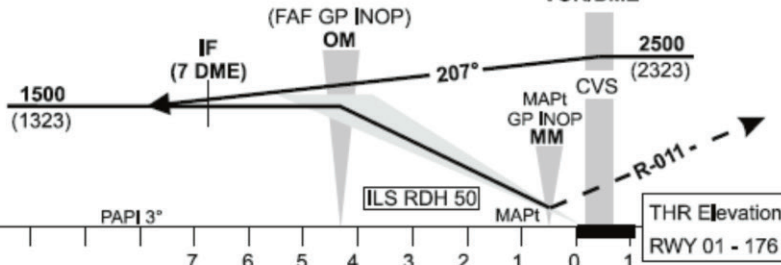
ACFT CAT - A to D



Transition Altitude - 7 000

MISSED APPROACH

Climb on track 011° until 2500' ALT,
then turn left to "CVS" VOR



REV : Transition ALT.

| OCA(H) | | A | B | C | D |
|------------------------|-------------|-----------|-----|------|------|
| STRAIGHT - IN APPROACH | | 379 (202) | | | |
| GP INOP | | 540 (363) | | | |
| CIRCLING | EAST RWY 01 | 750 | 890 | 1380 | 1750 |
| | WEST RWY 01 | 750 | 750 | 1280 | 1280 |

| GP INOP OM to MM 3.64 NM (5.2%) | | | | | | | |
|---------------------------------|--------|------|------|------|------|------|------|
| Speed | KT | 80 | 100 | 120 | 140 | 160 | 180 |
| Time | min:s | 2:46 | 2:13 | 1:51 | 1:35 | 1:23 | 1:14 |
| RATE | ft/min | 420 | 530 | 640 | 740 | 850 | 950 |