

**INSTRUMENT**  
**APPROACH**  
**CHART - ICAO**

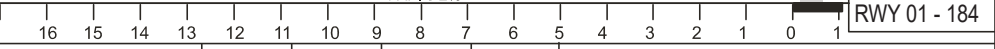
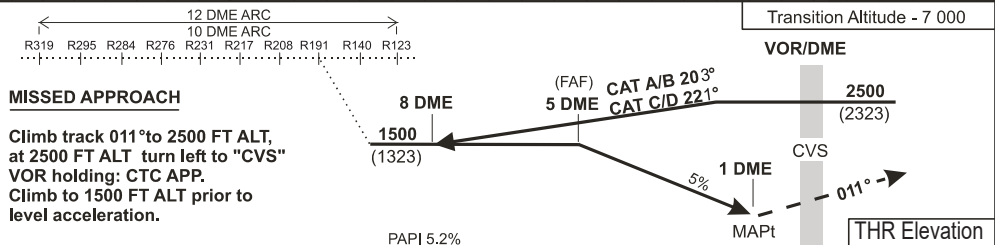
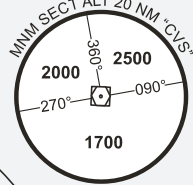
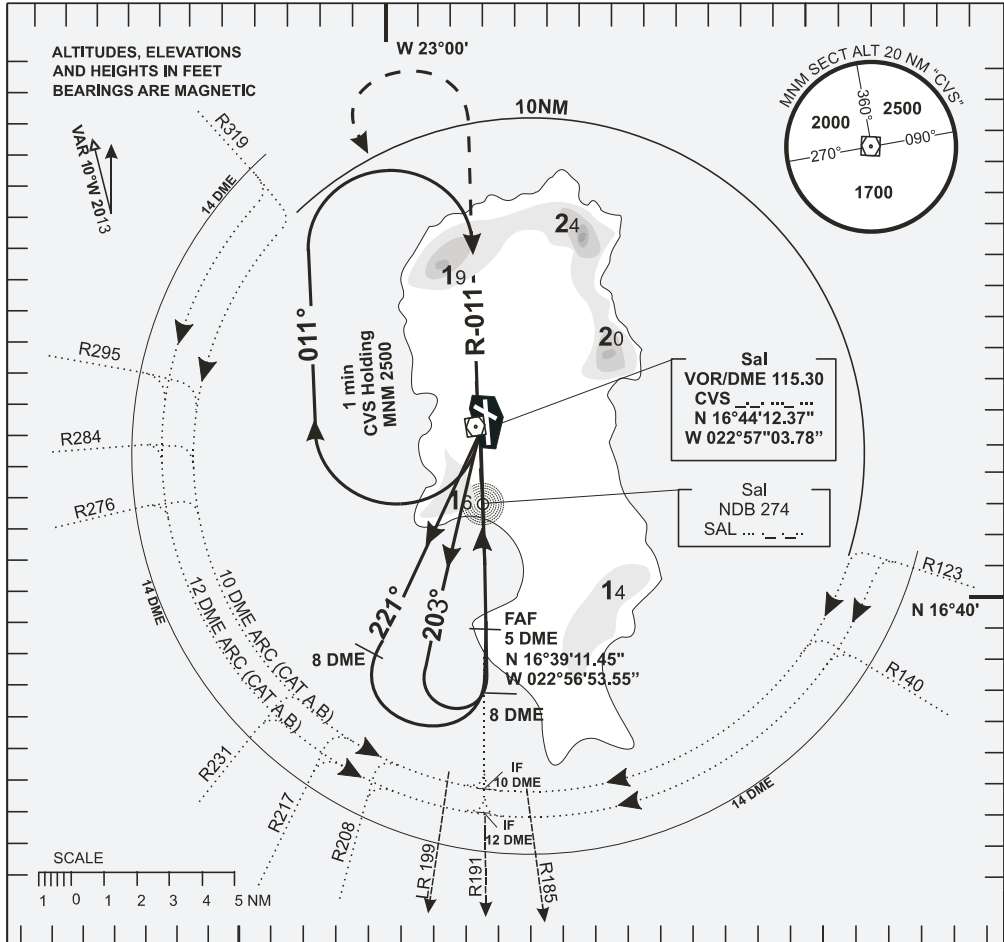
AERODROME ELEV - 184 ft  
 HEIGHTS RELATED TO  
 TDZ RWY-01 ELEV - 185 ft

TWR - 119.70  
 APP - 126.40

**SAL/ AMILCAR CABRAL**

VOR / DME  
 RWY 01

ACFT CAT - A to D



OCA(H)	A	B	C	D					
STRAIGHT - IN APPROACH	540 (363)								
CIRCLING	EAST RWY 01	750	890	1380	1750				
	WESTRWY 01	750	890	1280	1280				
						5 DME to MAPt			
Speed	KT	80	100	120	140	160	180		
Time	min:s	3:00	2:24	2:00	1:43	1:30	1:20		
RATE	ft/min	410	510	620	720	820	920		

REV.: Transition ALT.