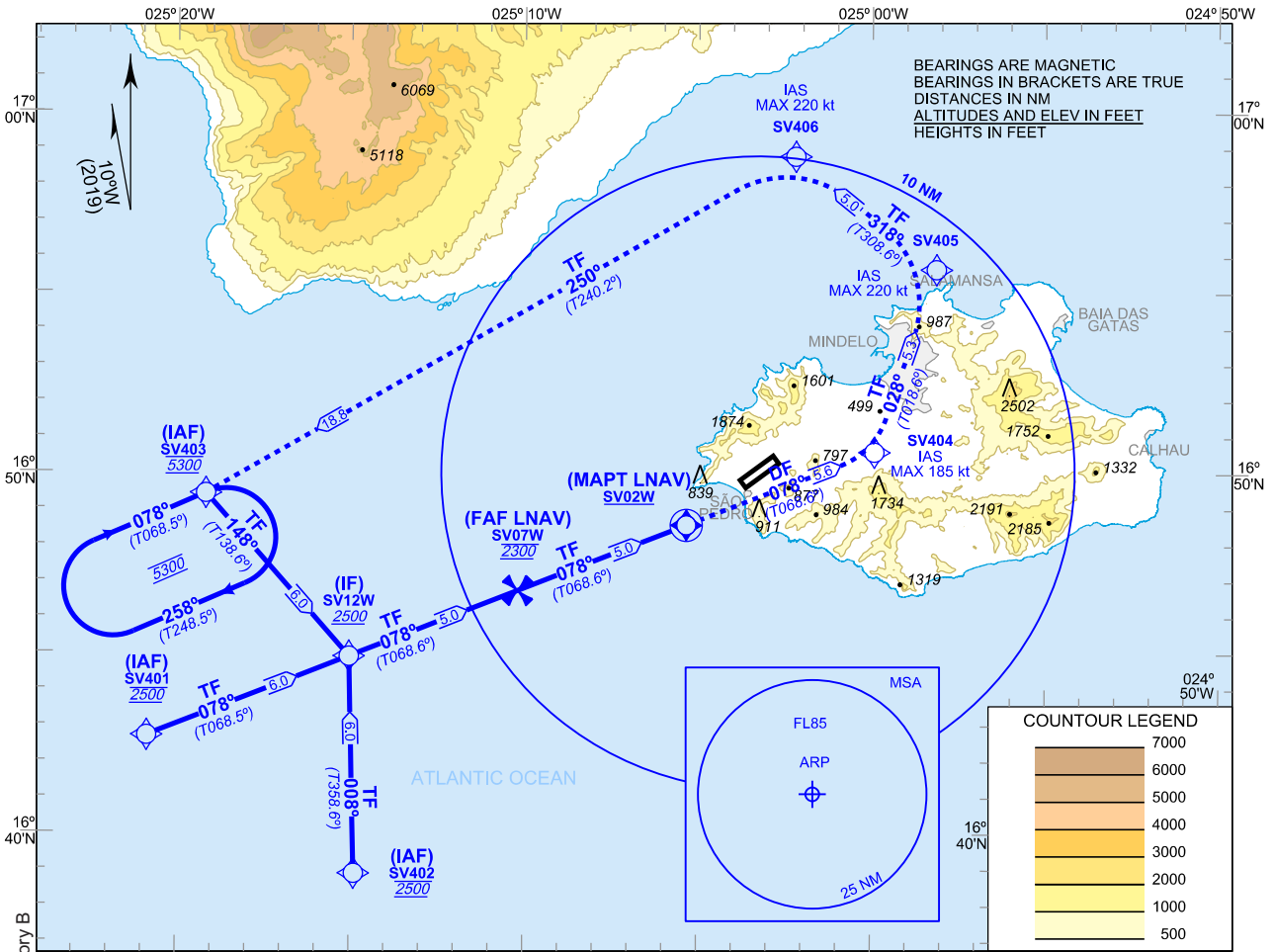


**INSTRUMENT  
APPROACH  
CHART - ICAO**

**AD ELEV 101 FT  
VAR 10°W**

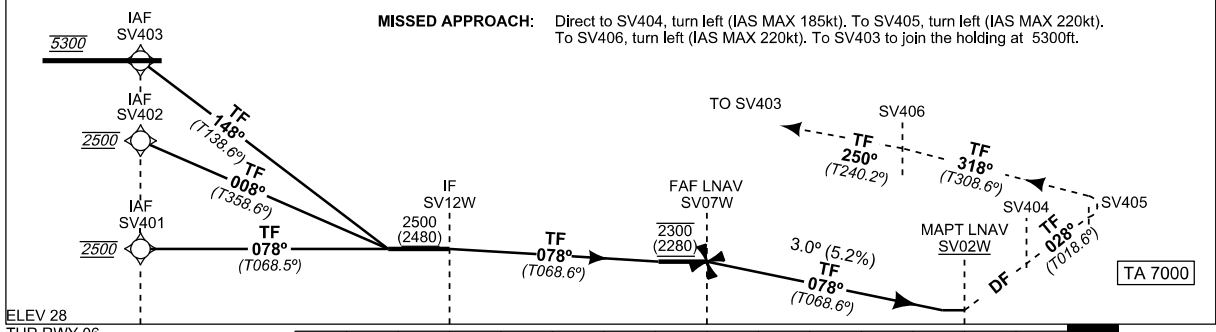
**TWR 118.400**

**SÃO PEDRO / Cesária Évora Intl  
SÃO VICENTE  
RNAV (GNSS) RWY 06**



Changed: Minimum box LNAV/VNAV 3.0% OCA for Aircraft Category B

**MISSED APPROACH:** Direct to SV404, turn left (IAS MAX 185kt). To SV405, turn left (IAS MAX 220kt). To SV406, turn left (IAS MAX 220kt). To SV403 to join the holding at 5300ft.



AIRCRAFT CATEGORY	A	B	C	D	AIRCRAFT CATEGORY	A	B	C	D
	<b>OCA (OCH)</b>					<b>OCA (OCH)</b>	<b>OCA (OCH)</b>	<b>OCA (OCH)</b>	<b>OCA (OCH)</b>
<b>LNAV 2.5%</b>	<b>1270</b>	<b>(1250)</b>			<b>LNAV/VNAV 2.5%</b>	<b>1150</b>	<b>(1130)</b>	<b>1160</b>	<b>(1140)</b>
<b>LNAV 3.0%</b>	<b>1190</b>	<b>(1170)</b>			<b>LNAV/VNAV 3.0%</b>	<b>1030</b>	<b>(1010)</b>	<b>1040</b>	<b>(1020)</b>
<b>LNAV 4.0%</b>	<b>990</b>	<b>(970)</b>			<b>LNAV/VNAV 4.0%</b>	<b>840</b>	<b>(820)</b>	<b>850</b>	<b>(830)</b>

- ① TIMING IS NOT AUTHORIZED FOR DEFINING MAPT
- ② CIRCLING NOT AUTHORIZED.

RNP APCH REQUIRED  
LNAV/VNAV TEMPERATURE: MINIMUM 5°C  
MAXIMUM 40°C

RW 06	7	6	5	4	3	2	1
ALT (HGT) FNA		1990 (1970)	1670 (1650)	1350 (1330)			
GS	kt	80	100	120	140	160	180
FAF-MAPT: ①	min:s						
ROD: 5.2%	ft/min	424	531	637	743	849	955