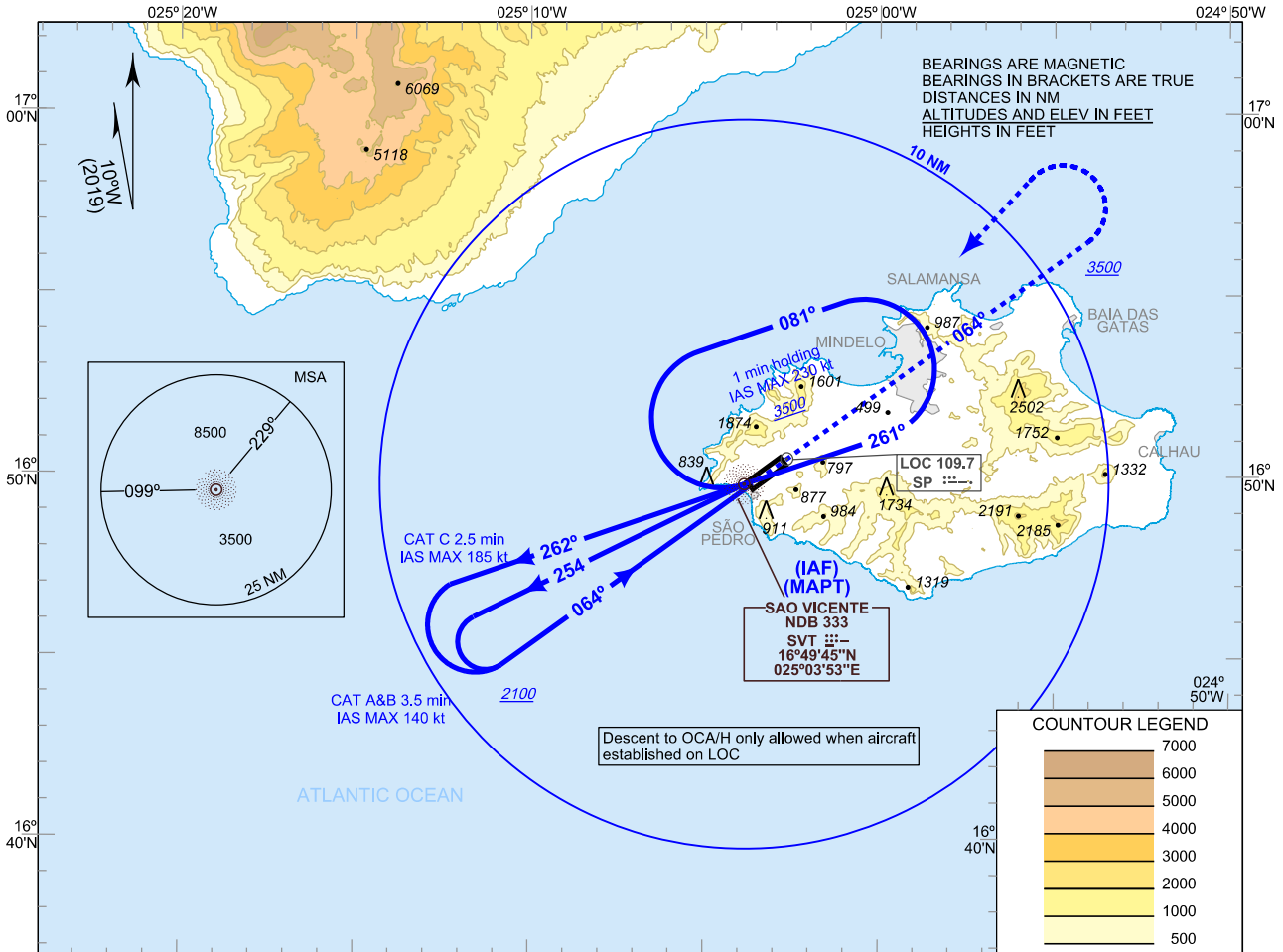


INSTRUMENT
APPROACH
CHART - ICAO

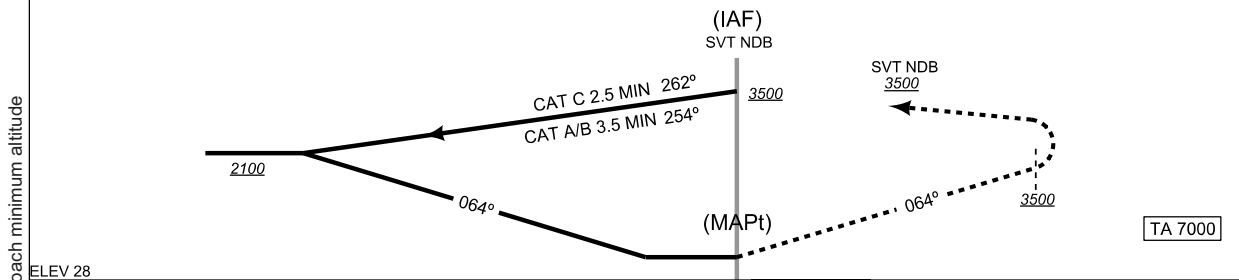
AD ELEV 101 FT
VAR 10°W

TWR 118.400

SÃO PEDRO / Cesária Évora Intl
SÃO VICENTE
NDB/LOC RWY 06



MISSED APPROACH: Climb on 064° SVT to 3500. Turn left direct to SVT NDB, enter HLD or as instructed.



AIRCRAFT CATEGORY	A	B	C	D			
STA 2.5%	OCA 1430 (HAT 1410)						
CIRCLING	No circling allowed						
YYY DME		5	4	3	2	1	
ALT (HGT) FNA							
GS	kt	80	100	120	140	160	180
FAF-THR:	min:s						
FAF-MAPT:	min:s						
ROD:	ft/min						

Changed: Missed approach minimum altitude