

INSTRUMENT

AERODROME ELEV - 184ft
 HEIGHTS RELATED TO
 THR RWY-01 ELEV - 184ft

TWR - 119.70
 APP - 126.40

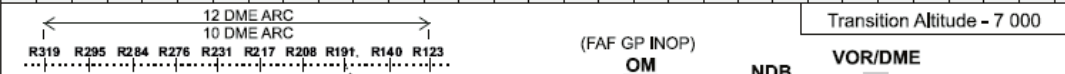
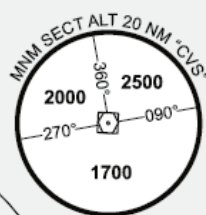
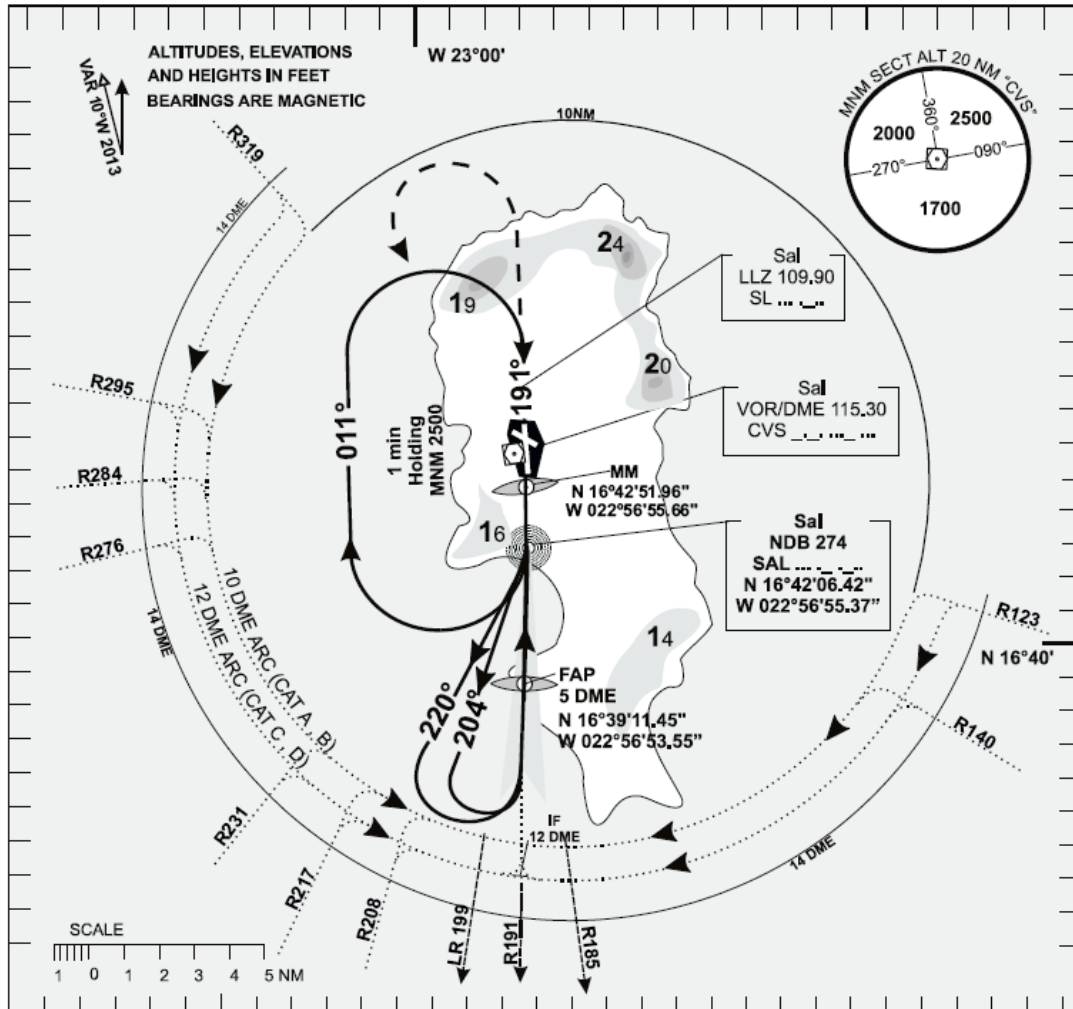
SAL/AMILCAR CABRAL

NDB/ILS
 RWY 01

APPROACH

CHART - ICAO

ACFT CAT - A to D



MISSED APPROACH

Climb track 011° to 2500 FT ALT,
 at 2500 FT ALT turn left to "SAL"

NDB holding: CTC APP.

Climb to 1500 FT ALT prior to
 level acceleration.

ILS - CAT 1 OCA(H)	A	B	C	D			
STRAIGHT - IN APPROACH	379 (202)						
GP INOP	540 (363)						
CIRCLING	EAST RWY 01	750	890	1380	1750		
	WEST RWY 01	750	750	1280	1280		
GP INOP OM to MM 3.64 NM (5.2%)							
Speed	KT	80	100	120	140	160	180
Time	min:s	2:46	2:13	1:51	1:35	1:23	1:14
RATE	ft/min	420	530	640	740	850	950

REV : Transition ALT.