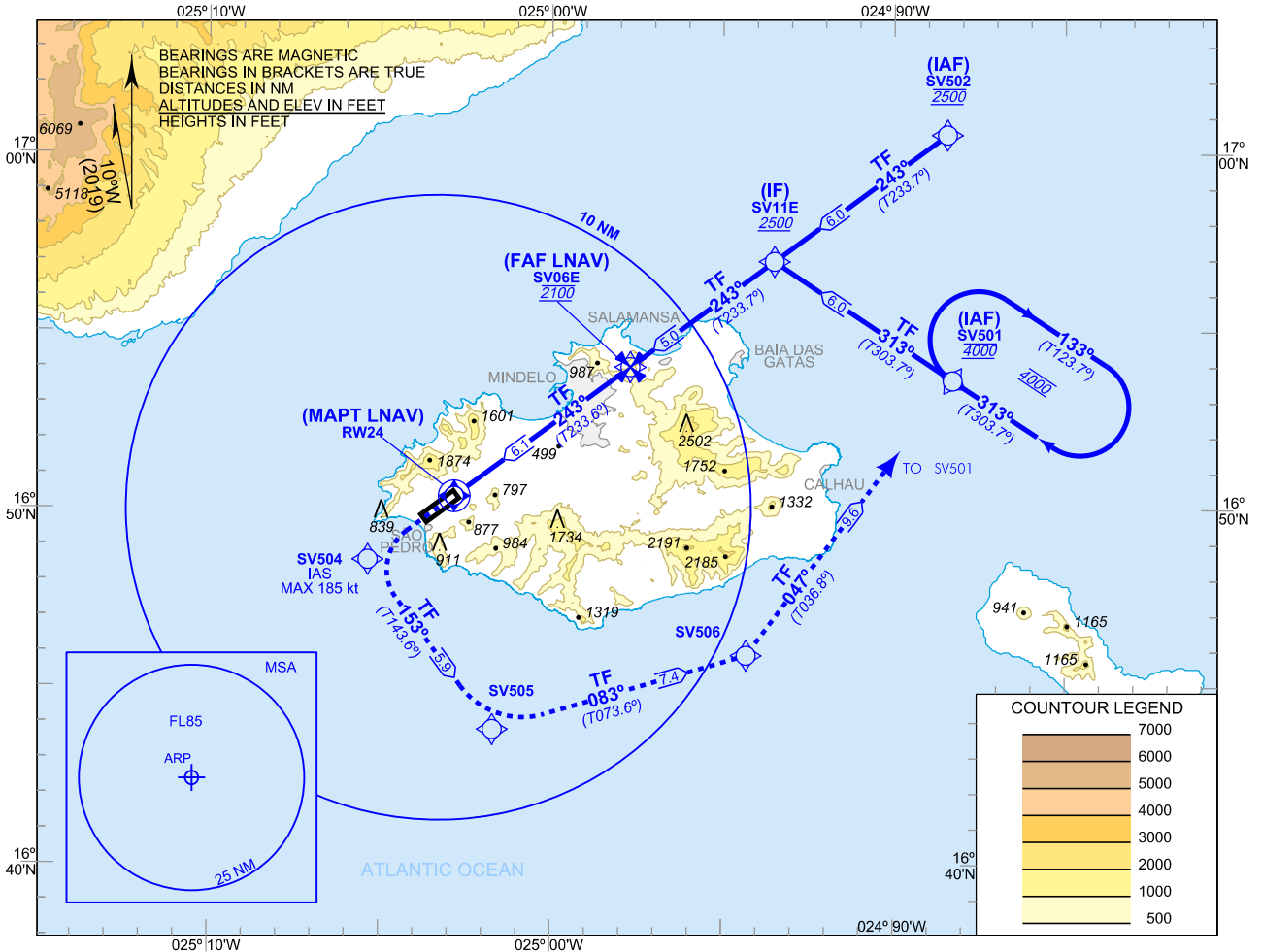


**INSTRUMENT
APPROACH
CHART - ICAO**

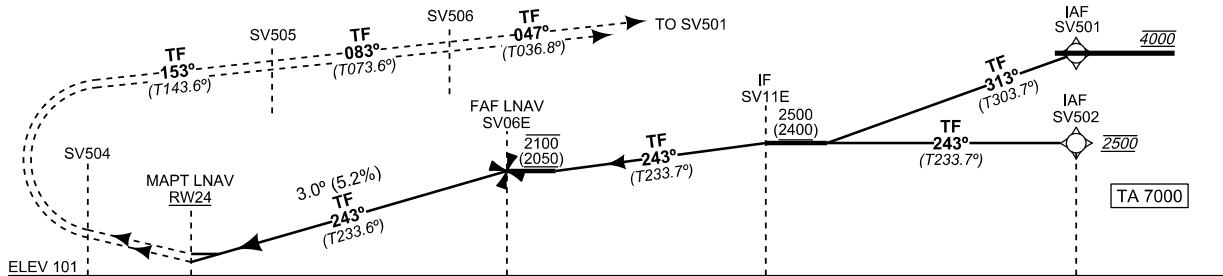
**AD ELEV 101 FT
VAR 10°W**

TWR 118.400

**SÃO PEDRO / Cesária Évora Intl
SAO VICENTE
RNAV (GNSS) RWY 24**



MISSED APPROACH: Climb up direct to SV504. Turn left (IAS MAX 185 kt) to SV505. Turn left to SV506. Turn left to SV501 to join the holding at 4000ft .



AIRCRAFT CATEGORY	A	B	C	D				
OCA (OCH)								
LNAV 2.5%	1290 (1190)							
LNAV/VNAV 2.5%	1290 (1190)							
CIRCLING ②								
① TIMING IS NOT AUTHORIZED FOR DEFINING MAPT ② CIRCLING NOT AUTHORIZED RNP APCH REQUIRED LNAV/VNAV TEMPERATURE: MINIMUM 5°C MAXIMUM 40°C	AD		6	5	4	3	2	1
	ALT (HGT) FNA		2070 (1970)	1750 (1650)	1430 (1330)			
	GS	kt	80	100	120	140	160	180
	FAF-MAPT: ①	min:s						
	ROD: 5.2 %	ft/min	424	531	637	743	849	955