

INSTRUMENT

AERODROME ELEV - 324 ft  
HEIGHTS RELATED TO  
THR RWY- 21 ELEV - 324 ft

PRAIA / AEROPORTO DA PRAIA

APPROACH

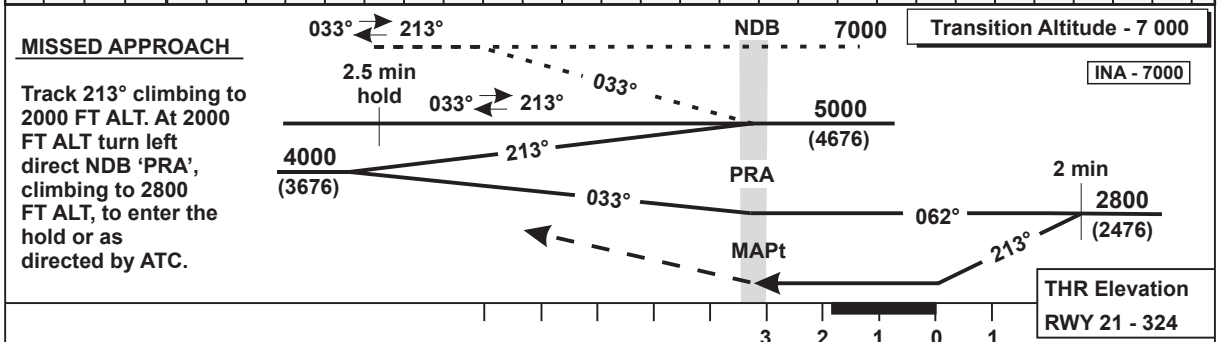
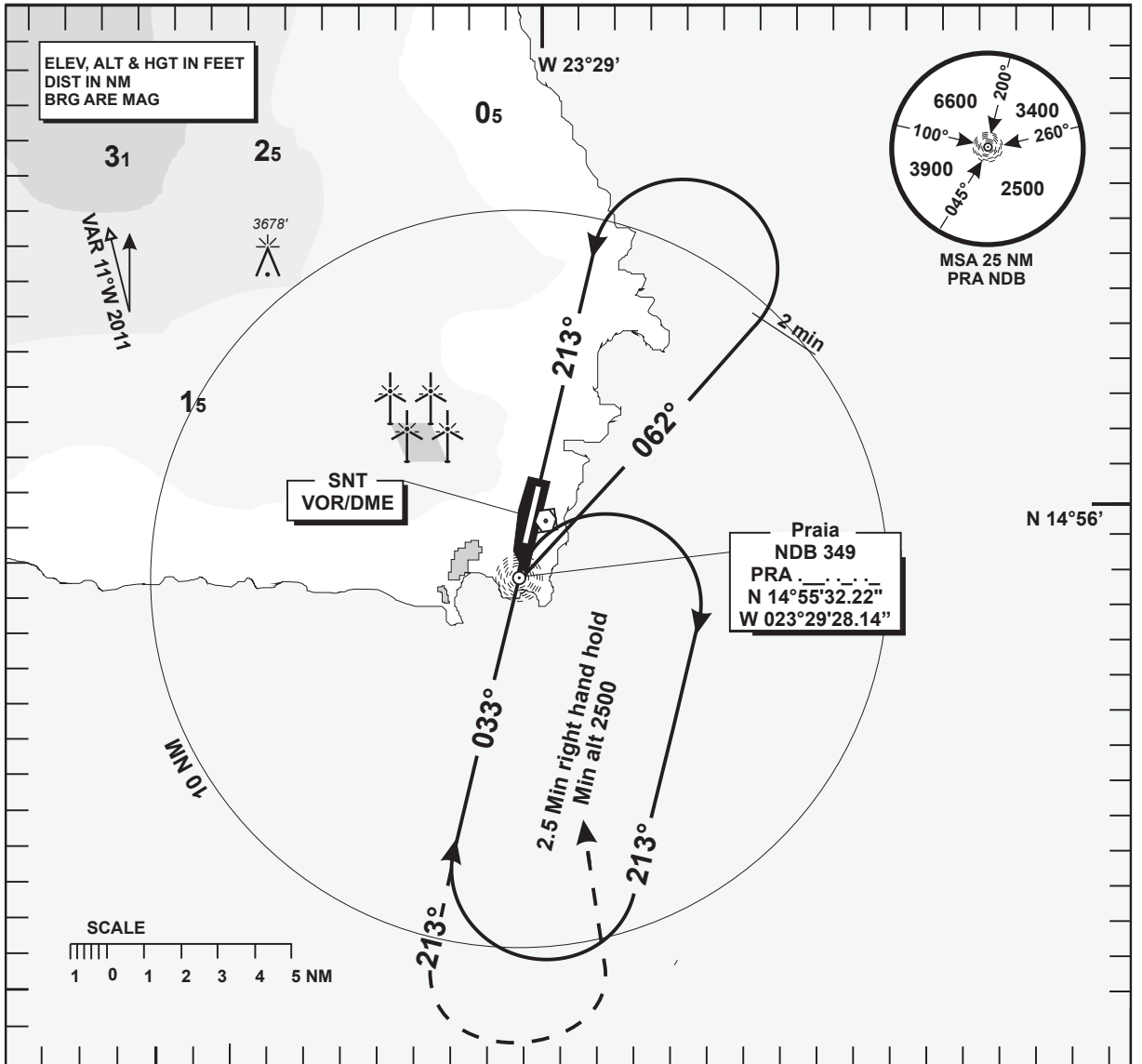
TWR - 118.2

NDB

RWY 21

CHART - ICAO

ACFT CAT - C & D



|                        |                |           |           |            |
|------------------------|----------------|-----------|-----------|------------|
| OCA(H)                 | A              | B         | C         | D          |
| STRAIGHT - IN APPROACH | NOT AUTHORISED |           |           |            |
| CIRCLING               | 790 (466)      | 830 (506) | 930 (606) | 1020 (696) |

1. MAX 250 Kts IAS for the missed approach and communications failure procedures.
  2. Circle to land approach only allowed east of QDM 039° and 197°.
  3. Circle to land at the discretion of the pilot in command.
  4. Timing not authorised to define MAPt.
  5. Turns before MAPt Prohibited.
  6. Base-Turn only. 80°/260° turn Prohibited.
- |       |        |    |     |     |     |     |     |
|-------|--------|----|-----|-----|-----|-----|-----|
| Speed | KT     | 80 | 100 | 120 | 140 | 160 | 180 |
| Time  | min:s  |    |     |     |     |     |     |
| RATE  | ft/min |    |     |     |     |     |     |