

INSTRUMENT

AERODROME ELEV - 324 ft
HEIGHTS RELATED TO
THR RWY- 21 ELEV - 324 ft

PRAIA / AEROPORTO DA PRAIA

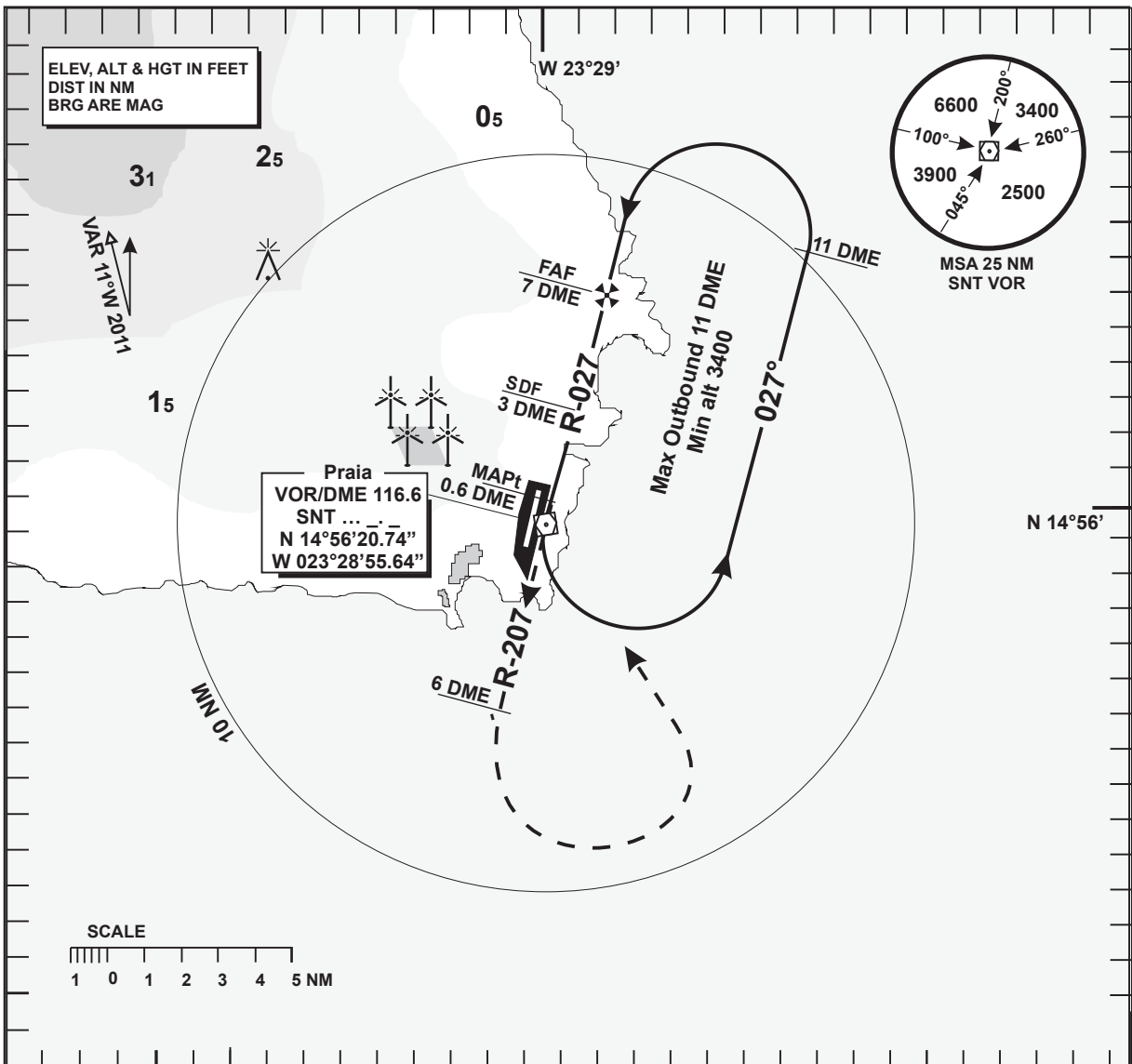
APPROACH

VOR/DME
RWY 21

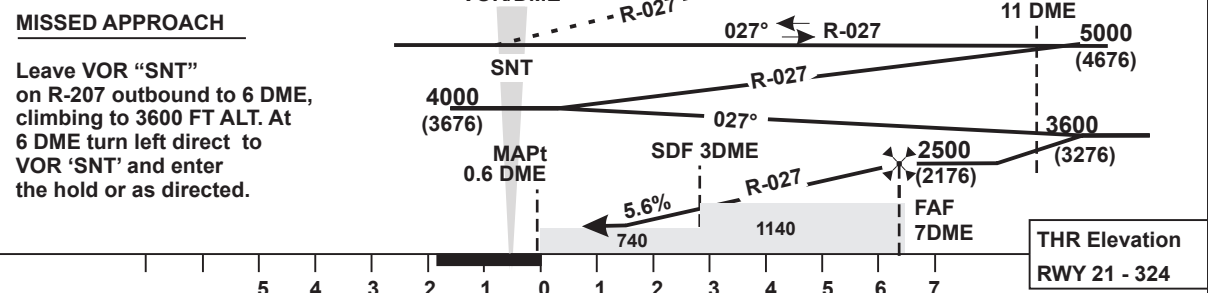
CHART - ICAO

ACFT CAT - A to D

TWR - 118.2



INA - 7000 Transition Altitude - 7 000



OCA(H)	A	B	C	D
STRAIGHT - IN APPROACH	740 (416)			
CIRCLING	790 (466)	830 (506)	930 (606)	1020 (696)

- MAX 250 Kts IAS for the missed approach and communications failure procedure.
 - Circle to land only allowed east of R-016 and R-219.
 - Circle to land at the discretion of the pilot in command.
 - Timing not authorized to define the MAPt.
 - Turns before MAPt Prohibited.
- | 6 DME to THR | | | | | | | |
|--------------|--------|------|------|------|------|------|------|
| Speed | KT | 80 | 100 | 120 | 140 | 160 | 180 |
| Time | min:s | 4:46 | 3:49 | 3:11 | 2:44 | 2:23 | 2:07 |
| Rate | ft/min | 448 | 560 | 672 | 784 | 896 | 1008 |