

**STANDARD DEPARTURE CHART
INSTRUMENT (SID)
Categories A-B-C**

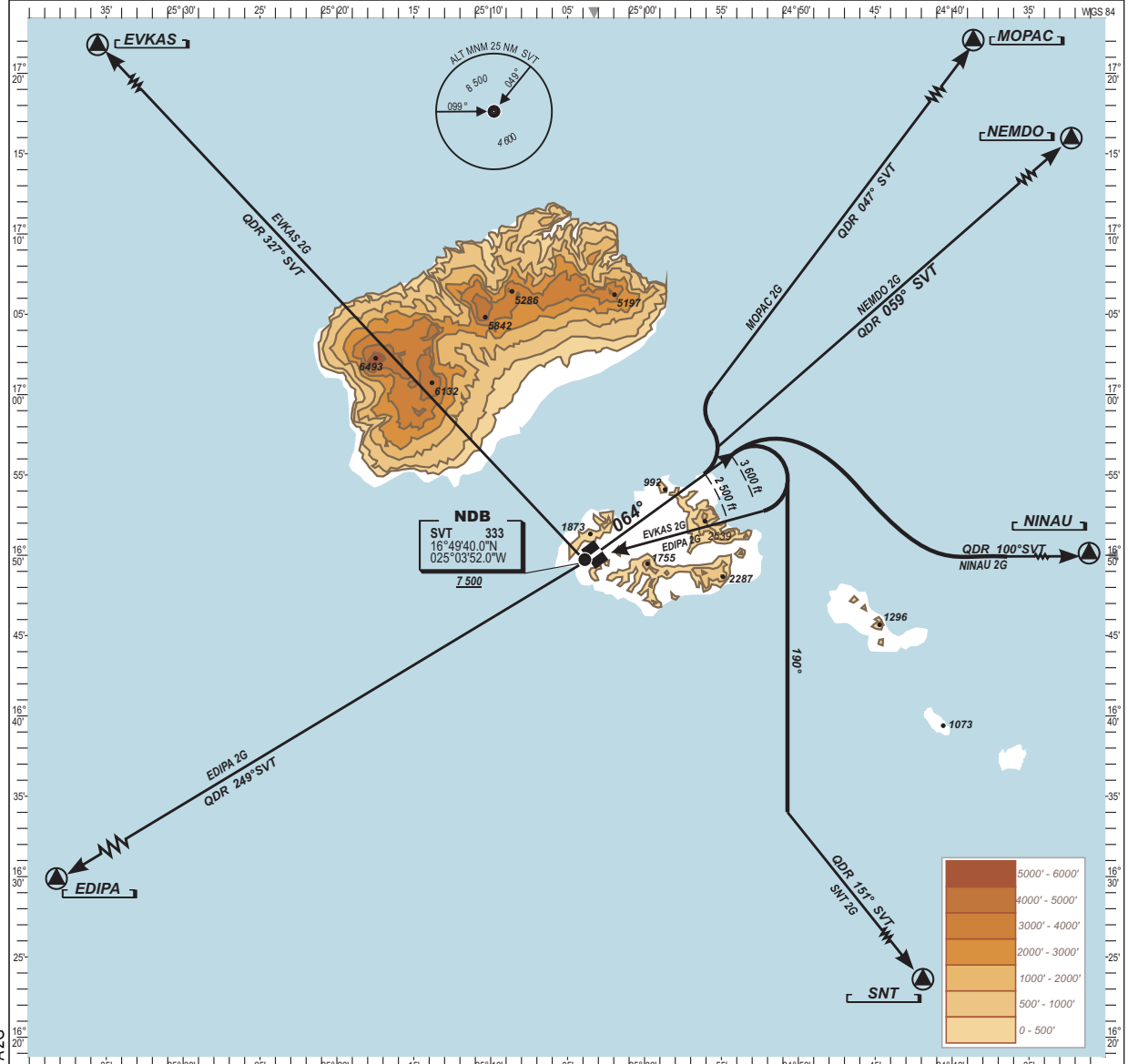
TWR 118.4
APP
ACC

**SÃO PEDRO CESARIA EVORA/Intl - (GVSU)
RWY 06**

MOPAC 2G, NEMDO 2G, NINAU 2G, SNT 2G, EDIPA 2G, EVKAS 2G

ELEV. & ALT IN FEET
DISTANCE IN NM
BRG ARE MAGNETIC
VAR 10°W (2020, 0.18°E yearly)

TRANSITIONAL ALTITUDE: 7 000



Changed: EDIPA 2G

EDIPA 2G: Climb on track 064° till passing 3 600 ft, then turn right direct to SVT. Follow QDR 249° SVT to EDIPA.

EVKAS 2G: Climb on track 064° till passing 3 600 ft, then turn right to overhead SVT at 7 500 ft or above. Follow QDR 327° SVT to EVKAS

MOPAC 2G: Climb on track 064° until passing 2 500 ft, then turn left and follow QDR 047° to MOPAC.

NEMDO 2G: Climb on track 064° until passing 2 500 ft, then turn left and follow QDR 059° to NEMDO.

NINAU 2G: Climb on track 064° till passing 3 600 ft, then turn right and follow QDR 100° SVT to NINAU.

SNT 2G: Climb on track 064° till passing 3 600 ft, then turn right and follow mag. route 190° to join and follow QDR 151° SVT to SNT VOR.