

**STANDARD DEPARTURE CHART
INSTRUMENT (SID)
Categories A-B-C**

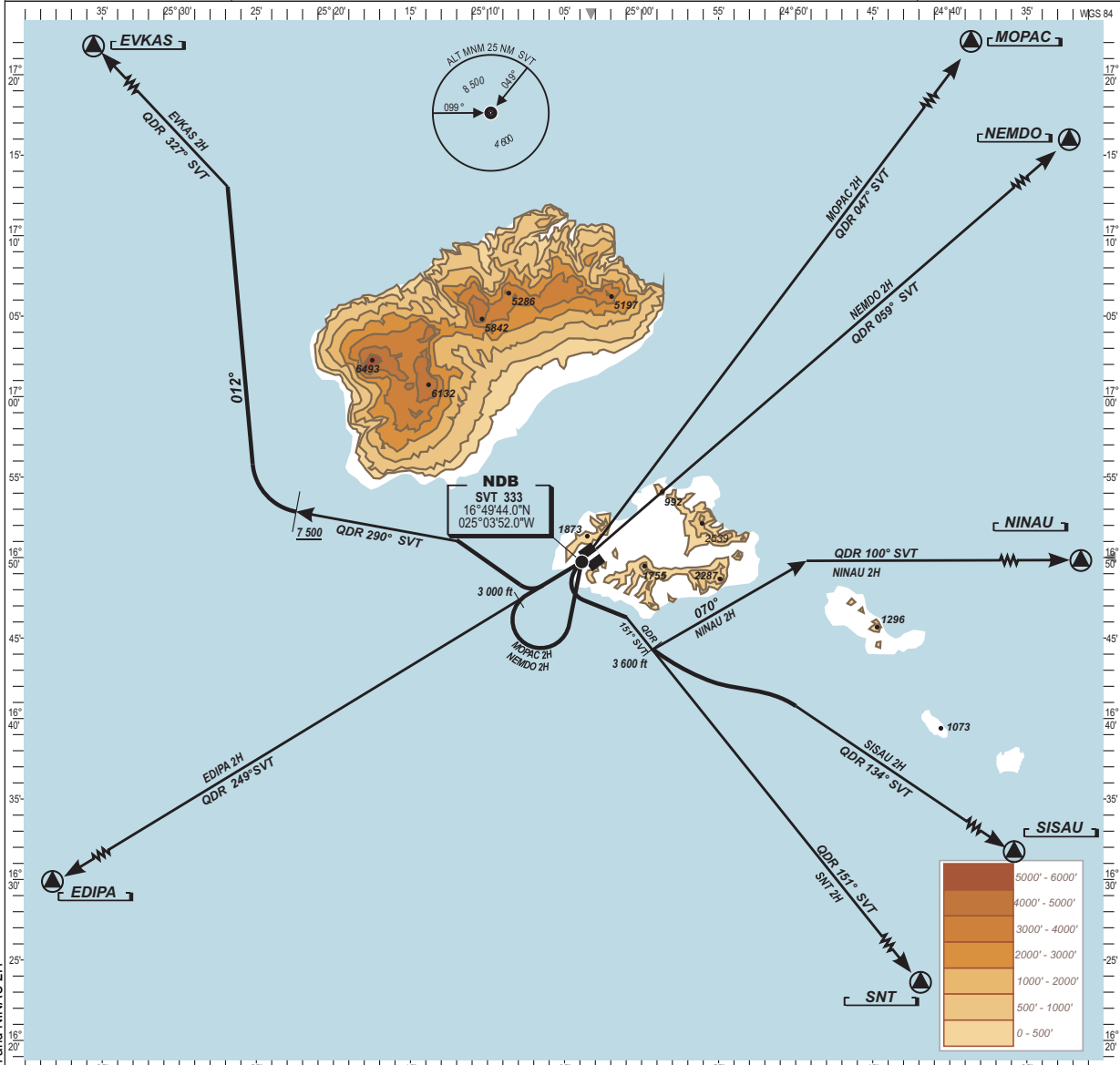
TWR 118.4
APP
ACC

**SÃO PEDRO CESARIA EVORA/Intl - (GVSU)
RWY 24**

MOPAC 2H, NEMDO 2H, NINAU 2H, SNT 2H, EDIPA 2H, EVKAS 2H, SISAU 2H

ELEV. & ALT. IN FEET
DISTANCE IN NM
BRG ARE MAGNETIC
VAR 10°W (2020, 0.18°E yearly)

TRANSITIONAL ALTITUDE: 7 000



Changed: EVKAS 2H and NINAU 2H

- EDIPA 2H:** After take-off, follow QDR 249° to EDIPA.
- EVKAS 2H:** After take-off, turn right and follow QDR 290° SVT till 7 500 ft then, turn right and follow mag. route 012° to intercept and follow QDR 327° to EVKAS. Do not turn before NDB SVT.
- MOPAC 2H:** Climb on runway heading till passing 3 000 ft, then, turn left to overhead SVT. Follow QDR 047° SVT to MOPAC.
- NEMDO 2H:** Climb on runway heading till passing 3 000 ft, then turn left to overhead SVT. Follow QDR 059° to NEMDO.
- NINAU 2H:** After passing SVT NDB, turn left, maximum bank angle 15° to join and follow QDR 151° SVT until passing 3 600 ft, then, turn left and follow mag route 070° to join and follow QDR 100° SVT to NINAU.
- SISAU 2H:** After passing SVT NDB, turn left, maximum bank angle 15° to join and follow QDR 151° SVT until passing 3 600 ft, then, turn left to join and follow QDR 134° SVT to SISAU (16°21'16"N - 024°20'11"W)
- SNT 2H:** After passing SVT NDB, turn left, maximum bank angle 15° to join and follow QDR 151° SVT to SNT VOR (RDL 333° SNT).