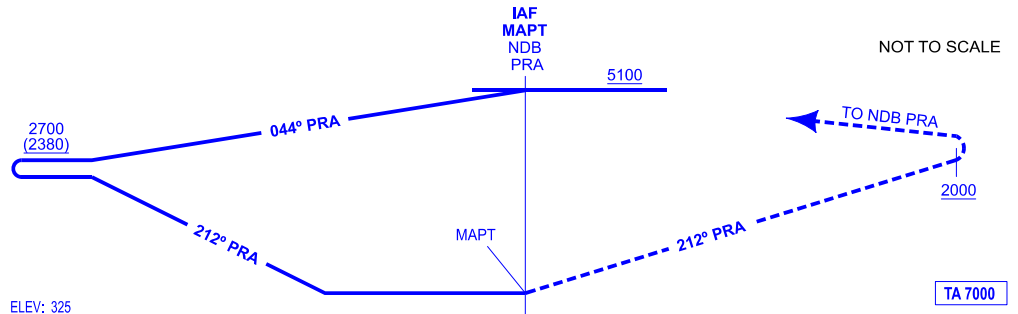


MISSED APCH: CLIMB ON MAGNETIC TRACK 212° PRA TO REACH 2000. TURN LEFT DIRECT TO NDB PRA CLIMBING TO 5100 FT TO JOIN THE HOLDING.

NOTES:

- Circle to land at the discretion of the pilot in command.
- Timing not authorised to define MAPT.
- No turns allowed before MAPT (overhead NDB PRA).
- Descent to OCA/H only allowed when actf established on final approach inbound track.
- MAX IAS 250 kt for the missed approach and communications failure procedure.



HGT REF ELEV AD

OCA/H	A	B	C	D
2.5%	RESTRICTED TO OCA/H CIRCUIT			
STA				
Circling (H) over	1020 (700)			

GS	kt	80	100	120	140	160	180					
FAF-THR:	min:s											
FAF-MAPT:	min:s											
ROD:	ft/min											
ALT/HGT DME () FNA												
13 DME	12 DME	11 DME	10 DME	9 DME	8 DME	7 DME	6 DME	5 DME	4 DME	3 DME	2 DME	1 DME