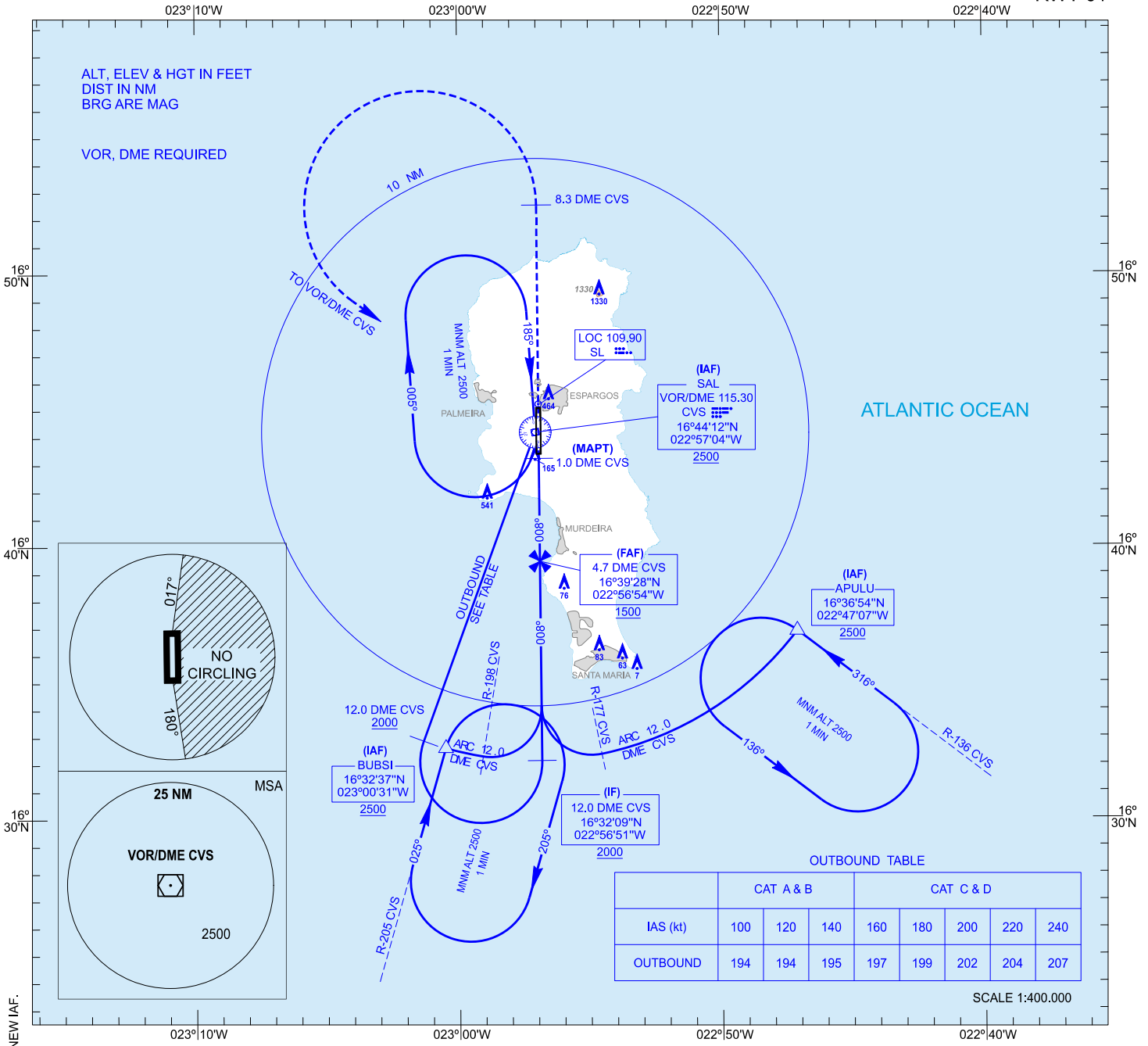


INSTRUMENT
APPROACH
CHART - ICAO

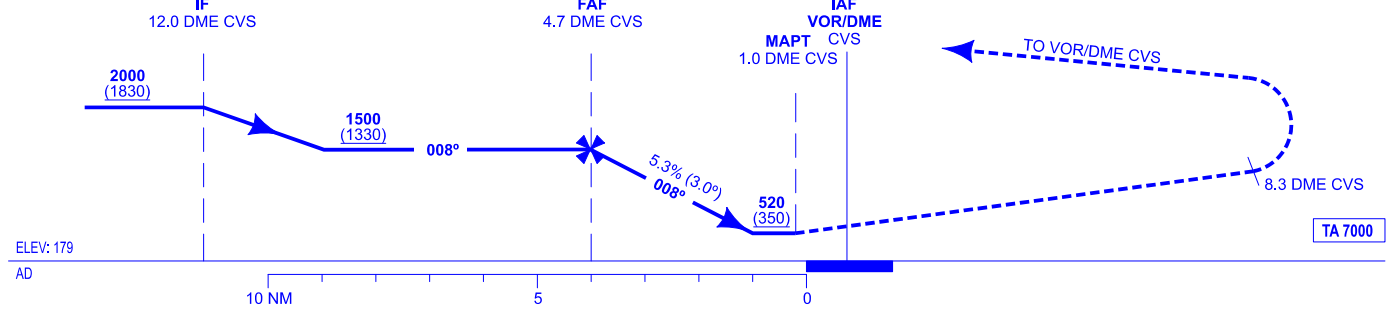
ELEV AD 179
VAR 9°W (2020)

APP 126.400
TWR 119.700

SAL ISLAND / Amilcar Cabral
SAL
LOC
RWY 01



MISSED APCH: CLIMB ON RUNWAY HEADING TO REACH 8.3 DME CVS. TURN LEFT DIRECT TO VOR/DME CVS CLIMBING TO 2500 TO JOIN THE HOLDING.



HGT REF ELEV AD

OCA/H	A	B	C	D
STA	520 (350)			
	2.5%			
Circling (H) over	780 (610)	1080 (910)	1400 (1230)	

GS	kt	80	100	120	140	160	180
FAF-THR: 4.0 NM	min:s	2:58	2:22	1:59	1:42	1:29	1:19
FAF-MAPT:	min:s	TIMING NOT AUTHORIZED					
ROD: 5.3%	ft/min	429	536	643	751	858	965
ALT/HGT DME (CVS) FNA							
13 DME	12 DME	11 DME	10 DME	9 DME	8 DME	7 DME	6 DME
						1270 (1090)	950 (770)
							630 (450)

CHANGES: MAGNETIC VARIATION, HEADINGS AND RADIALS, EDITORIAL CHANGE, NEW IAF.