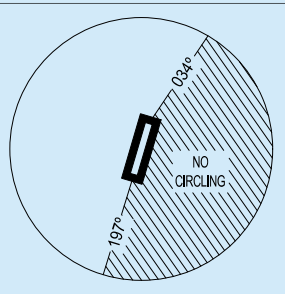
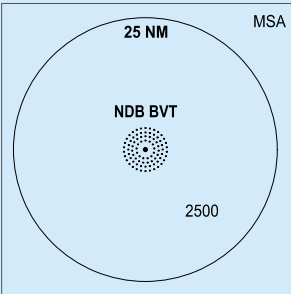
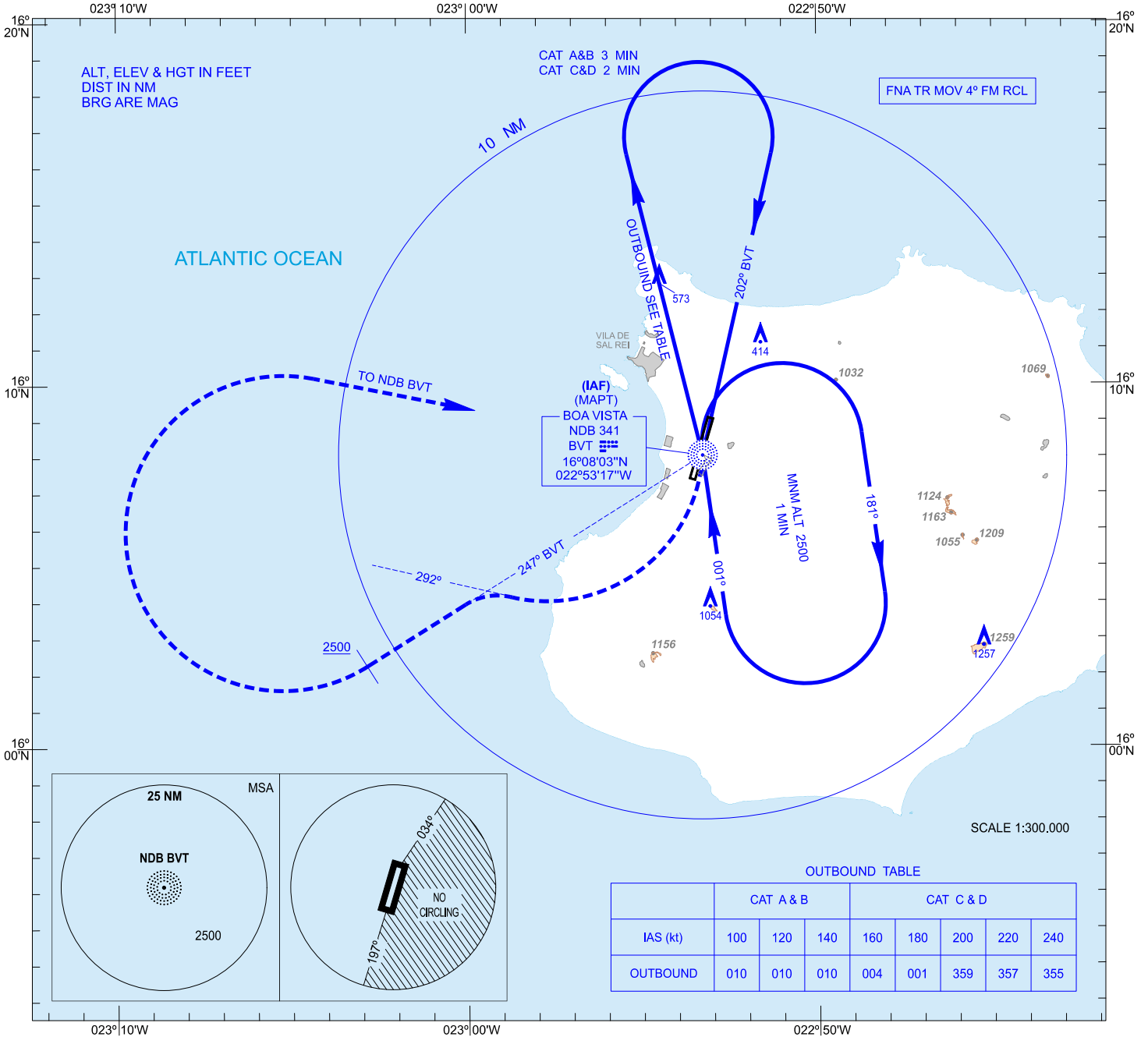


INSTRUMENT
APPROACH
CHART - ICAO

ELEV AD 91
VAR 9°W (2020)

APP 126.400
TWR 118.900

RABIL / Aristides Pereira
BOA VISTA
NDB
RWY 21



OUTBOUND TABLE

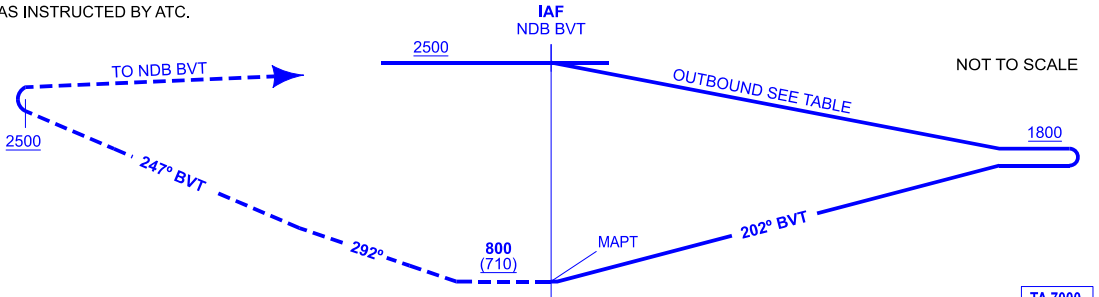
	CAT A & B				CAT C & D			
IAS (kt)	100	120	140	160	180	200	220	240
OUTBOUND	010	010	010	004	001	359	357	355

MISSED APCH: TURN RIGHT ON MAPT TO FOLLOW MAGNETIC TRACK 292°. TURN LEFT TO FOLLOW MAGNETIC TRACK 247° BVT UP TO REACH 2500 FT. TURN RIGHT DIRECT TO NDB BVT TO JOIN THE HOLDING OR AS INSTRUCTED BY ATC.

NOTES:

- Timing not authorized to define MAPT
- No turns allowed before MAPT (overhead NDB BVT)
- Descent to OCA/H only allowed when acft established on final approach inbound track

WARNING: RWY03 PAPI not to be used beyond 4.5 NM ARP due to obstacle clearance infringement



HGT REF ELEV AD

OCA/H	A	B	C	D
STA	2.5%	800 (710)		
Circling (H) over	800 (710)	1510 (1420)	1520 (1430)	

GS	kt	80	100	120	140	160	180					
FAF-THR:	min:s											
FAF-MAPT:	min:s											
ROD:	ft/min											
ALT/HGT DME () FNA												
13 DME	12 DME	11 DME	10 DME	9 DME	8 DME	7 DME	6 DME	5 DME	4 DME	3 DME	2 DME	1 DME

CHANGES: MAGNETIC VARIATION, HEADINGS, EDITORIAL CHANGE.