

**STANDARD DEPARTURE CHART
INSTRUMENT (SID)
Categories A-B-C-D**

APP 126.4
TWR 119.7
GND

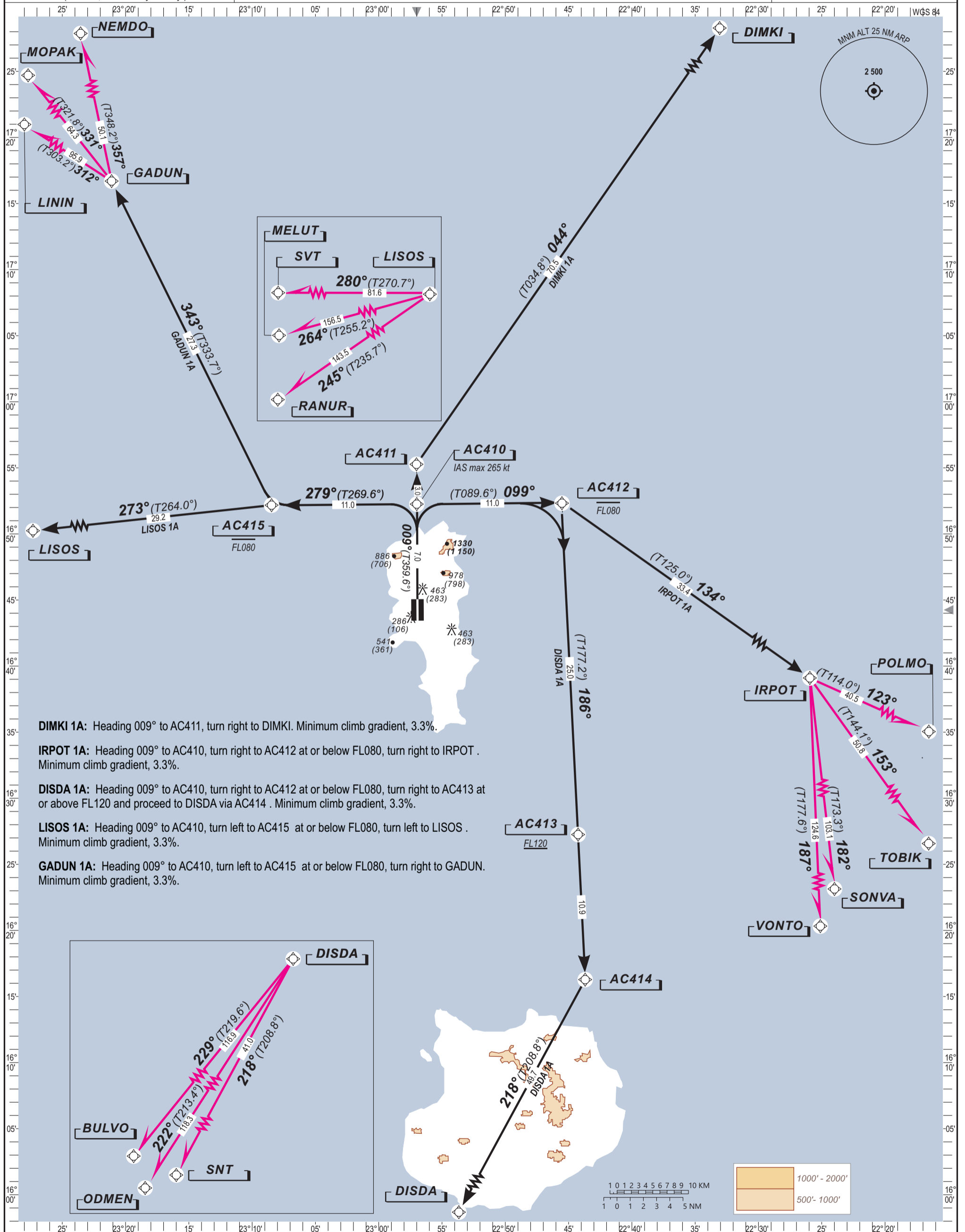
**SAL ISLAND / AMILCAR CABRAL Intl (GVAC)
RWY 01
DIMKI 1A, IRPOT 1A, DISDA 1A, LISOS 1A, GADUN 1A**

ELEV. & ALT IN FEET
DISTANCE IN NM
BRG ARE MAGNETIC OR TRUE (°T)
VAR 9°W (2020, 0°11'E yearly)

Notes:
-Continuous Climb Operations

RNP 1 OPERATIONS

TRANSITIONAL ALTITUDE: 7 000



- DIMKI 1A:** Heading 009° to AC411, turn right to DIMKI. Minimum climb gradient, 3.3%.
- IRPOT 1A:** Heading 009° to AC410, turn right to AC412 at or below FL080, turn right to IRPOT. Minimum climb gradient, 3.3%.
- DISDA 1A:** Heading 009° to AC410, turn right to AC412 at or below FL080, turn right to AC413 at or above FL120 and proceed to DISDA via AC414. Minimum climb gradient, 3.3%.
- LISOS 1A:** Heading 009° to AC410, turn left to AC415 at or below FL080, turn left to LISOS. Minimum climb gradient, 3.3%.
- GADUN 1A:** Heading 009° to AC410, turn left to AC415 at or below FL080, turn right to GADUN. Minimum climb gradient, 3.3%.

