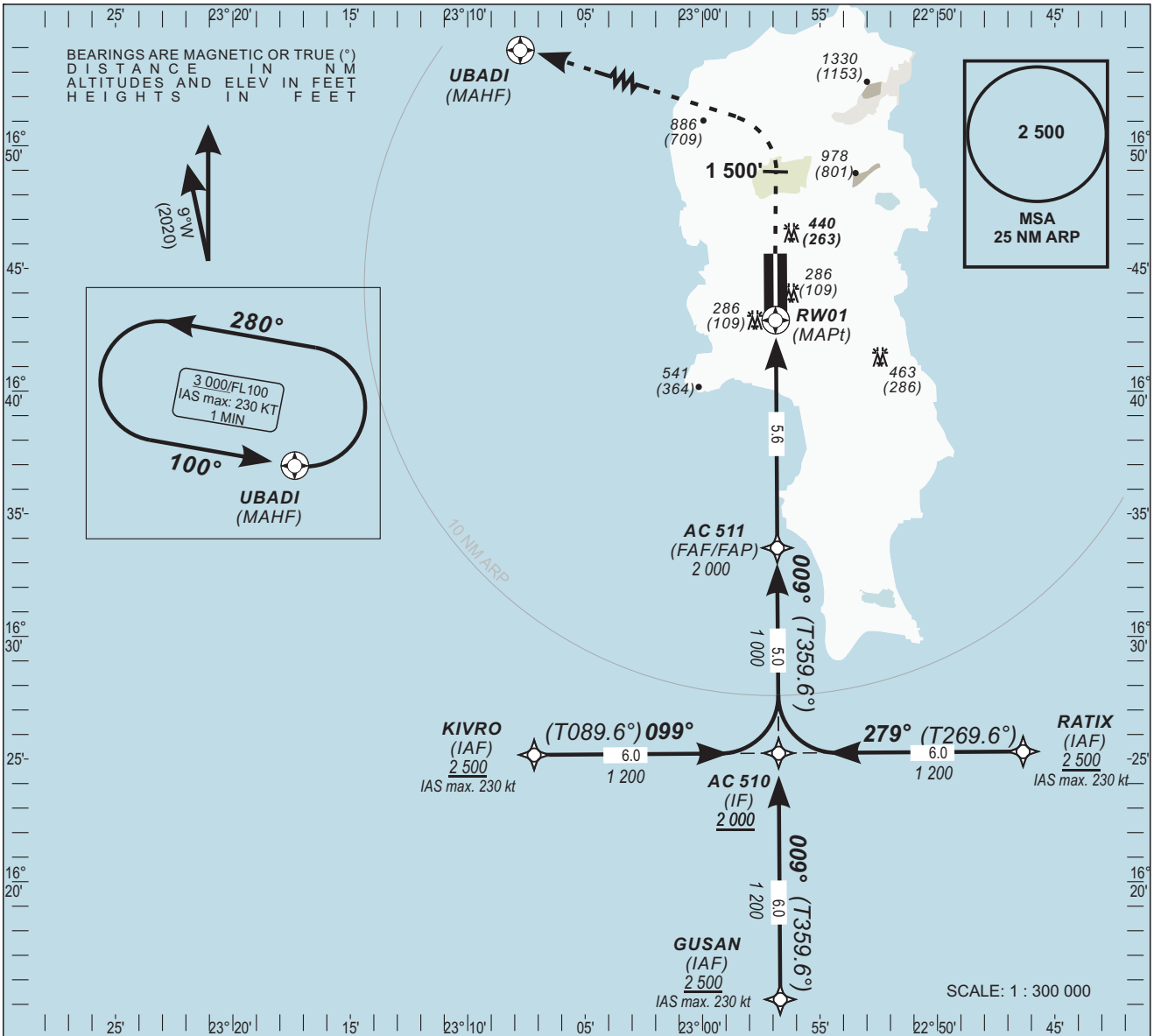


INSTRUMENT APPROACH CHART - ICAO

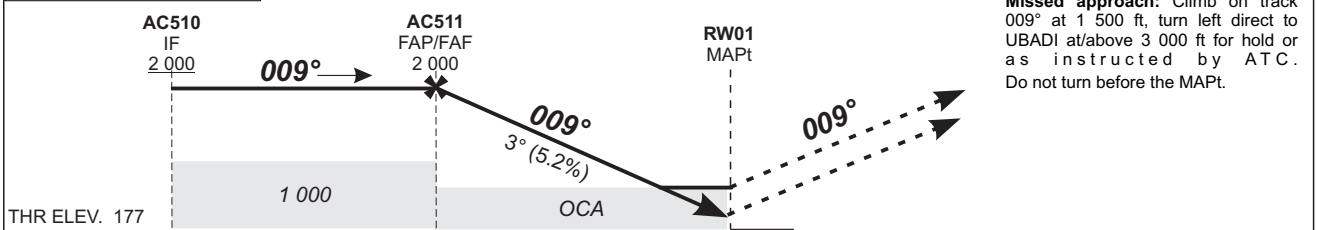
AERODROME ELEV - 179 ft
 HEIGHTS RELATED TO THR RWY 01 ELEV - 177 ft

APP - 126.4
 TWR - 119.7

SAL ISLAND / AMILCAR CABRAL Intl (GVAC)
 RNP RWY 01
 ACFT CAT - A - B - C - D



Transition Altitude - 7 000



THR RWY 01	10.0	10	6.5	5	0	5
OCA (OCH)	A		B		D	
LNAV / VNAV (1)	460 (280)		470 (300)		520 (340)	
LNAV	610 (440)					
CIRCLING (2)	East RWY 01	760 (590)	1 130 (960)	1 380 (1 210)	1 730 (1 560)	
	West RWY 01	760 (590)	840 (670)	930 (970)	930 (970)	

Notes:
 - RDH: 15 m
 - (1) Minimum temperature : 10°C
 - (2) Daytime only . OCH AAL
 - Timing not authorized for defining MAPt
 - For data tabulation see verso

To RW01 (NM)	FAF	5	4	3	2	1	
Altitude	2 000	1 830	1 510	1 190	870	550	
Ground Speed	kt	80	100	120	140	160	180
Timing FAF-MAPt 5.6 NM	min:s	4:12	3:22	2:48	2:24	2:06	1:52
Rate of Descent FAF-MAPt	ft/min	420	530	640	740	850	950