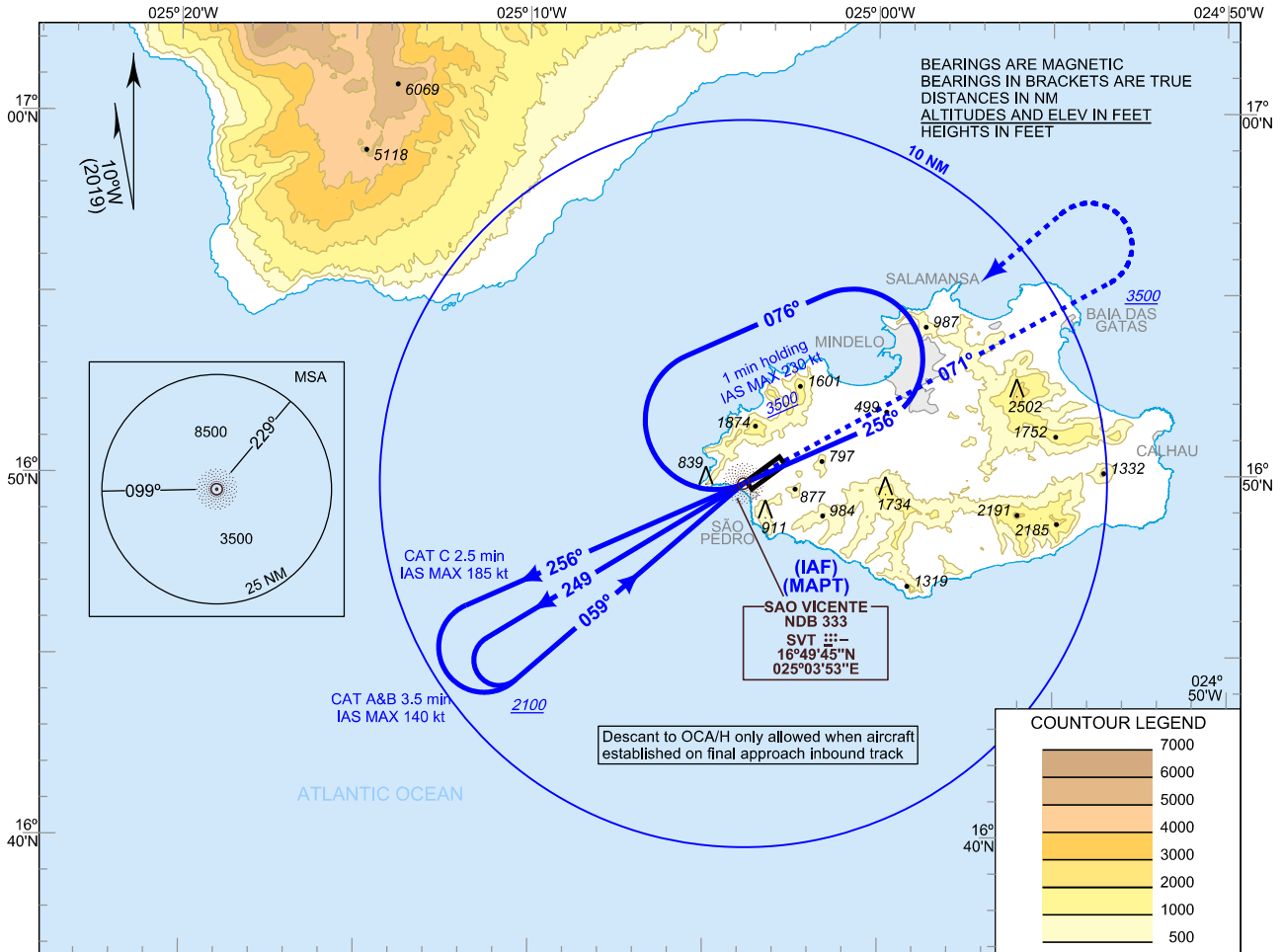


INSTRUMENT  
APPROACH  
CHART - ICAO

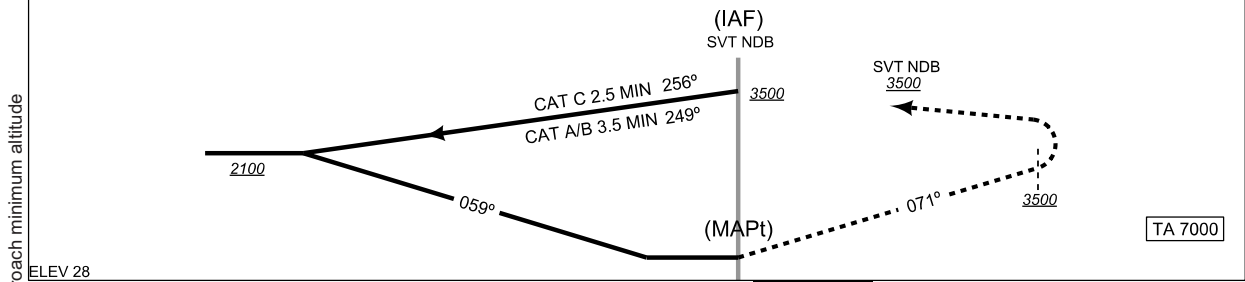
AD ELEV 101 FT  
VAR 10°W

TWR 118.400

SÃO PEDRO / Cesária Évora Intl  
SÃO VICENTE  
NDB RWY 06



**MISSED APPROACH:** Climb on 071° SVT to 3500. Turn left direct to SVT NDB, enter HLD or as instructed.



Changed: Missed approach minimum altitude

AIRCRAFT CATEGORY	A	B	C	D			
STA 2.5%		OCA 1900 (HAT 1880)					
CIRCLING		No circling allowed					
YYY DME		5	4	3	2	1	
ALT (HGT) FNA							
GS	kt	80	100	120	140	160	180
FAF-THR:	min:s						
FAF-MAPT:	min:s						
ROD:	ft/min						