

**STANDARD ARRIVAL CHART  
INSTRUMENT (STAR)  
Categories A-B-C-D**

APP 118.2  
TWR 118.2  
GND

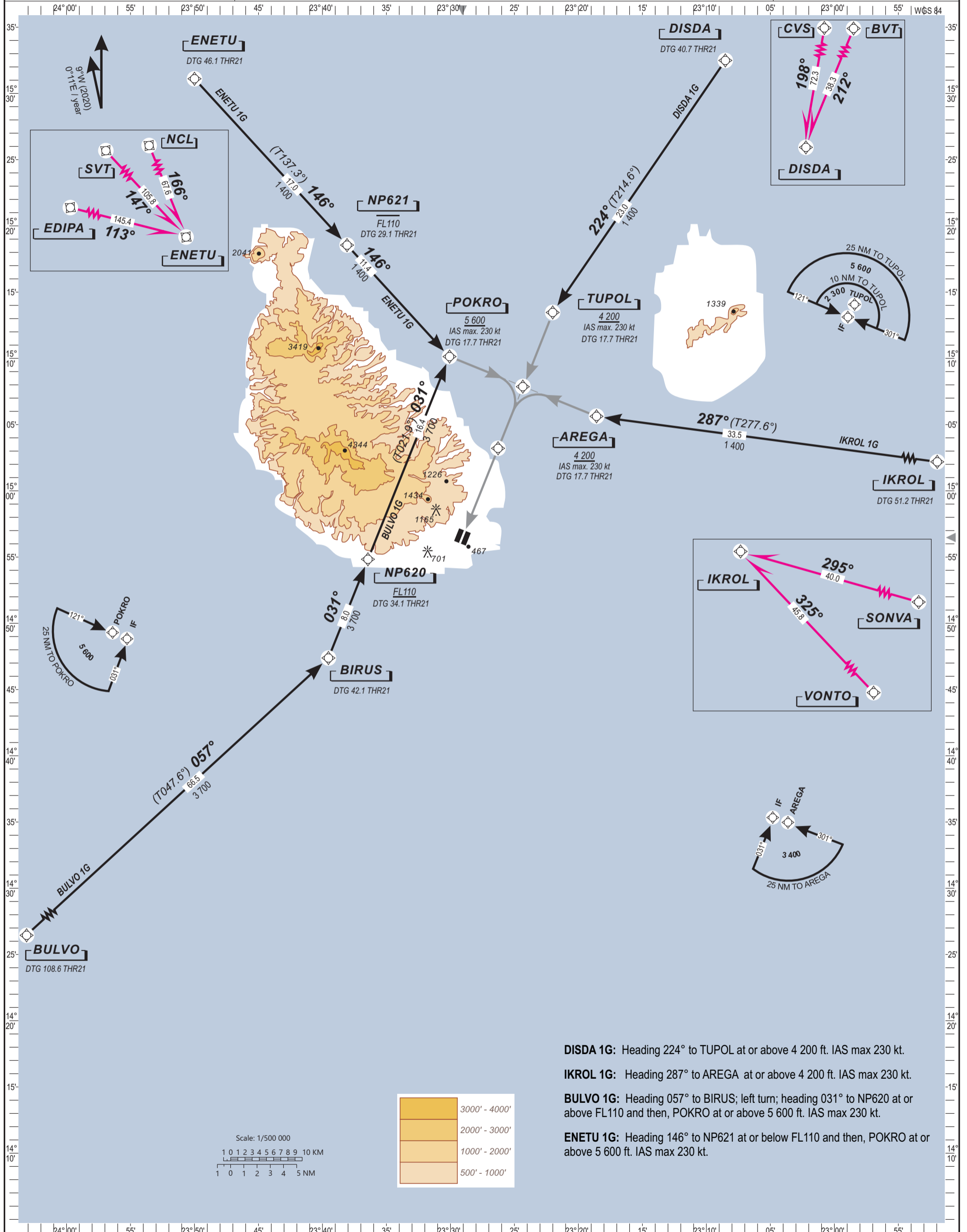
**PRAIA / Nelson MANDELA Intl (GVNP)  
RWY 21  
DISDA 1G, IKROL 1G, BULVO 1G, ENETU 1G**

ELEV. & ALT IN FEET  
DISTANCE IN NM  
BRG ARE MAGNETIC OR TRUE (°T)  
VAR 9°W (2020, 0°11'E yearly)

**Notes:**  
-Continuous Descent Operations

**RNP 1 OPERATIONS**

TRANSITION ALTITUDE: 7 000



**DISDA 1G:** Heading 224° to TUPOL at or above 4 200 ft. IAS max 230 kt.

**IKROL 1G:** Heading 287° to AREGA at or above 4 200 ft. IAS max 230 kt.

**BULVO 1G:** Heading 057° to BIRUS; left turn; heading 031° to NP620 at or above FL110 and then, POKRO at or above 5 600 ft. IAS max 230 kt.

**ENETU 1G:** Heading 146° to NP621 at or below FL110 and then, POKRO at or above 5 600 ft. IAS max 230 kt.

