

**STANDARD ARRIVAL CHART
INSTRUMENT (STAR)
Categories A-B-C-D**

APP 118.2
TWR 118.2
GND

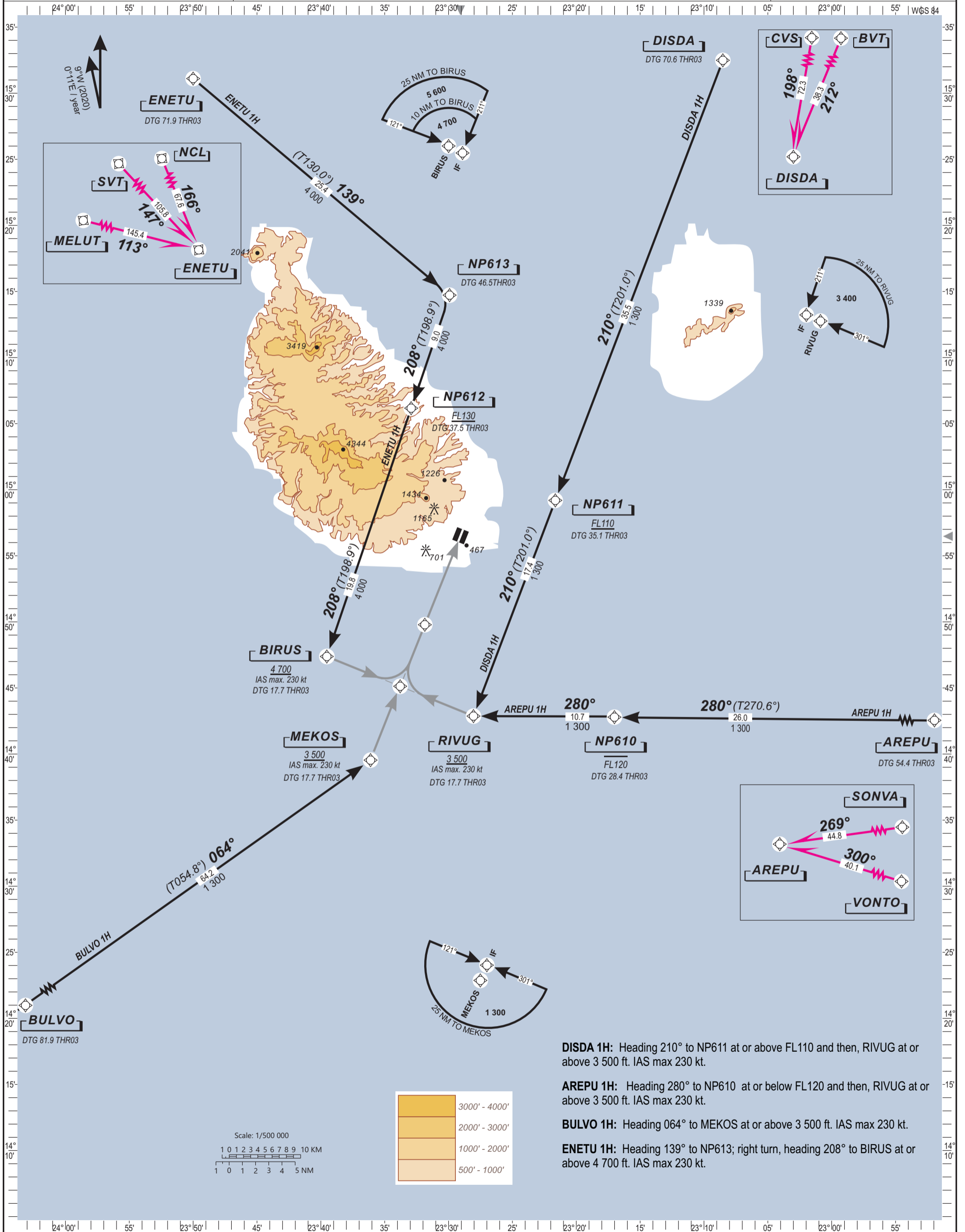
**PRAIA / Nelson MANDELA Intl (GVNP)
RWY 03
DISDA 1H, AREPU 1H, BULVO 1H, ENETU 1H**

ELEV. & ALT IN FEET
DISTANCE IN NM
BRG ARE MAGNETIC OR TRUE (°T)
VAR 9°W (2020, 0°11'E yearly)

Notes:
-Continuous Descent Operations

RNP 1 OPERATIONS

TRANSITION ALTITUDE: 7 000



DISDA 1H: Heading 210° to NP611 at or above FL110 and then, RIVUG at or above 3 500 ft. IAS max 230 kt.

AREPU 1H: Heading 280° to NP610 at or below FL120 and then, RIVUG at or above 3 500 ft. IAS max 230 kt.

BULVO 1H: Heading 064° to MEKOS at or above 3 500 ft. IAS max 230 kt.

ENETU 1H: Heading 139° to NP613; right turn, heading 208° to BIRUS at or above 4 700 ft. IAS max 230 kt.