

**STANDARD DEPARTURE CHART
INSTRUMENT (SID)
Categories A-B-C-D**

APP 118.2
TWR 118.2
GND

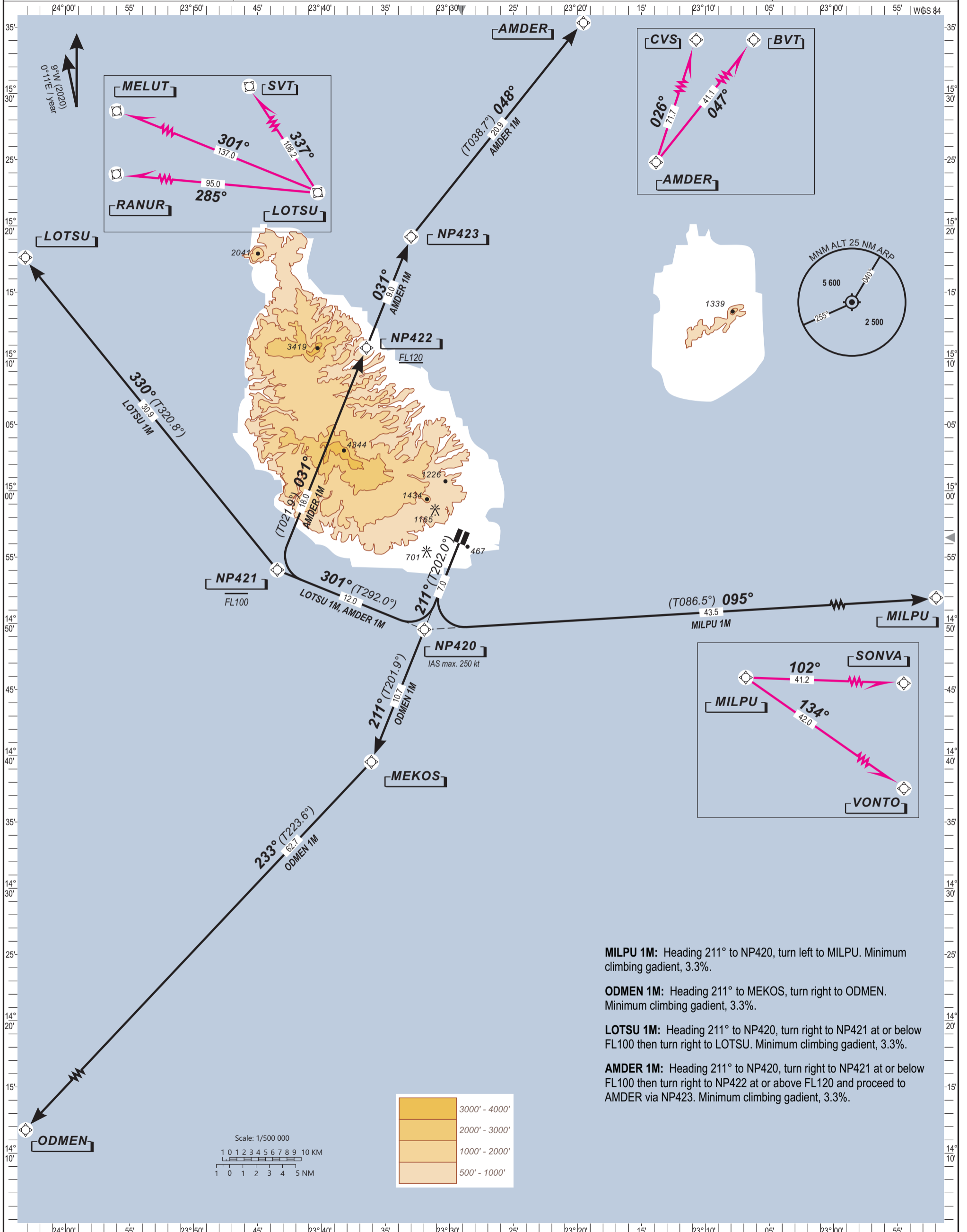
**PRAIA / Nelson MANDELA Intl (GVNP)
RWY 21
AMDER 1M, MILPU 1M, ODMEN 1M, LOTSU 1M**

ELEV. & ALT IN FEET
DISTANCE IN NM
BRG ARE MAGNETIC OR TRUE (°T)
VAR 9°W(2020,0°11'E yearly)

Notes:
-Continuous Climb Operations

RNP 1 OPERATIONS

TRANSITION ALTITUDE: 7 000



- MILPU 1M:** Heading 211° to NP420, turn left to MILPU. Minimum climbing gradient, 3.3%.
- ODMEN 1M:** Heading 211° to MEKOS, turn right to ODMEN. Minimum climbing gradient, 3.3%.
- LOTSU 1M:** Heading 211° to NP420, turn right to NP421 at or below FL100 then turn right to LOTSU. Minimum climbing gradient, 3.3%.
- AMDER 1M:** Heading 211° to NP420, turn right to NP421 at or below FL100 then turn right to NP422 at or above FL120 and proceed to AMDER via NP423. Minimum climbing gradient, 3.3%.

