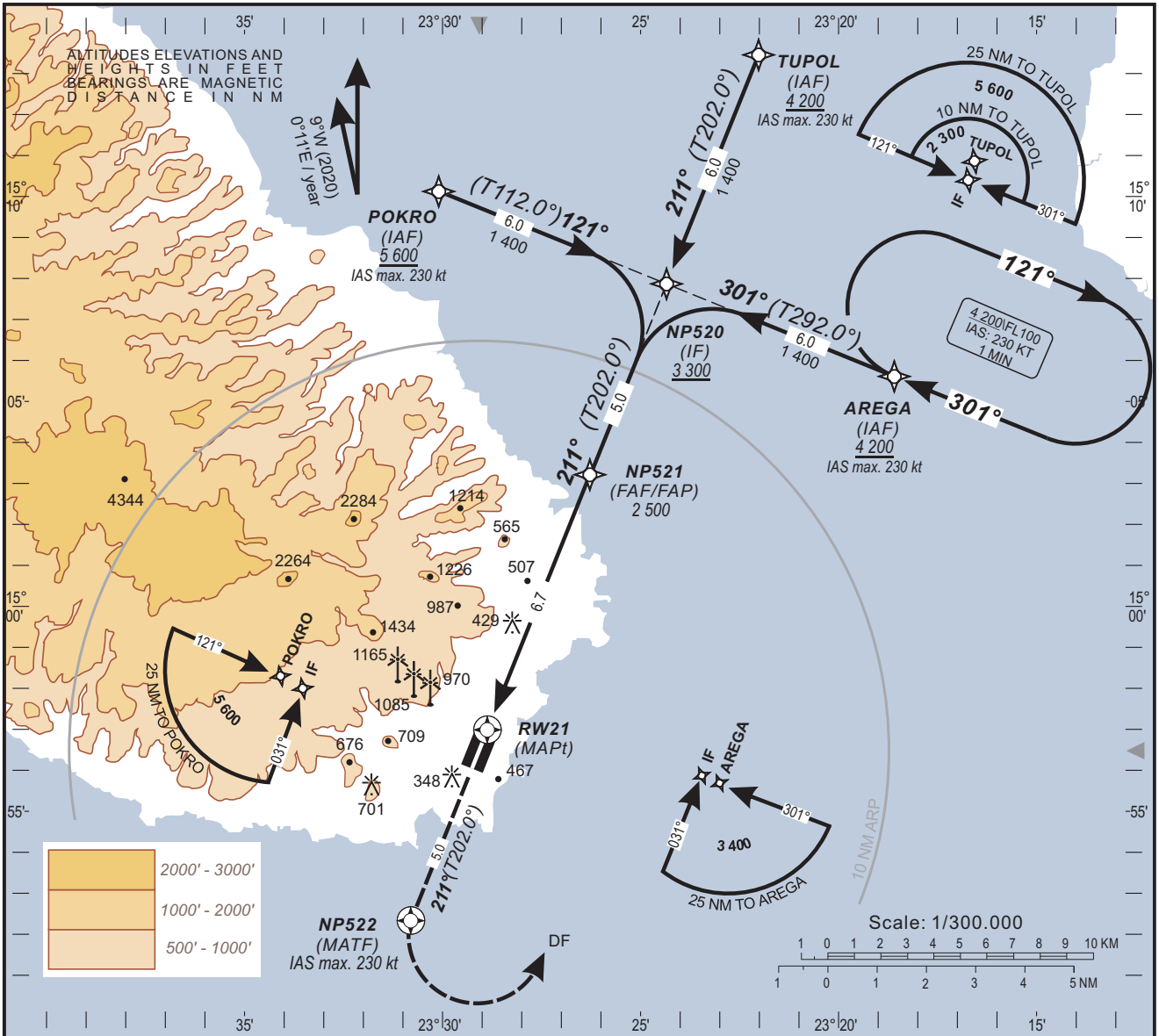


INSTRUMENT
APPROACH
CHART - ICAO

AERODROME ELEV - 326 ft
HEIGHTS RELATED TO
THR RWY 21 ELEV - 326 ft

TWR - 118.2

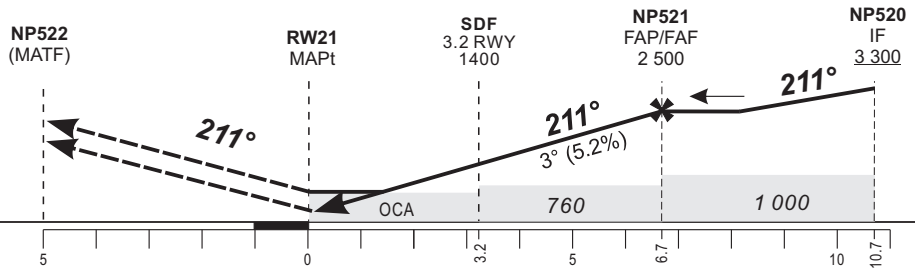
PRAIA / Nelson MANDELA Intl (GVNP)
RNP RWY 21
ACFT CAT - A - B - C - D



Transition Altitude - 7 000

MISSED APPROACH:
Climb on track 211°. At NP506 turn left direct to AREGA for hold at or above 4 200 ft or as instructed by ATC.
IAS max. 230 kt.

THR ELEV. 326
THR RWY 21



OCA (OCH)	A	B	C	D				
LNAV / VNAV (1)	580 (250)	580 (250)	580 (250)	600 (270)				
LNAV	680 (350)							
CIRCLING (2)	790 (480)	830 (520)	930 (620)	1 020 (710)				
- RDH: 15 m - (1) Minimum temperature: 10°C - (2) Daytime only - OCH AAL - Allowed east of R-016 and R-219 - Timing not authorized for defining MAPt - For data tabulation see verso	To RW21 (NM)	6	5	4	3	2	1	
	Altitude	2 270	1 955	1 640	1 325	1 010	-	
	Ground Speed	kt	80	100	120	140	160	180
	Timing FAF-MAPt 6.7 NM	min:s	5:02	4:01	3:21	2:52	2:31	2:14
Rate of Descent FAF-MAPt	ft/min	421	527	632	737	843	948	